

SCHEDULE

Crowne Plaza He Fei



HBA

HIRSCH/BEDNER
ASSOCIATES
DESIGN CONSULTANTS

17/ 46 DOUGLAS ST.
MILTON 4064
QUEENSLAND
AUSTRALIA
FAX 62.3858.5699
■ TEL 617.3858.5688 ■
www.HBAdesign.com

Guestroom Sanitary

Issued: 30-Nov-10

Project No.	5908
Series	100
Type	BH

NOTE: FOR ALL
 . DESIGN INTENT ONLY
 . CONTRACTORS TO SUBMIT SHOP DRAWINGS TO HBA FOR APPROVAL PRIOR TO CONSTRUCTION
 . VERIFY ALL DIMENSIONS ON SITE. REPORT ANY DISCREPANCY TO HBA DESIGNER
 . WATER PROOF/NON SLIP MATERIAL TO ALL WET AREAS
 . EXTERNAL WINDOW & DOOR INFORMATION TO BE CONFIRMED BY ARCHITECT.

- *施工前供应商需向HBA提供施工图
- *现场核实所有尺寸,任何差异需通知HBA设计师
- *所有湿区必须使用防水或防滑材料
- *外部的窗和门资料由建筑师确认

- 镜前除雾器 BH 129 MIRROR DEFOGGER
- 地漏(底下) BH 130 REMOVABLE DRAIN SYSTEM
- 手巾架-小 BH 117 HAND TOWEL RAIL-S
- 淋浴器 BH 113 SHOWER SET
- 雨淋花洒 BH 114 RAIN SHOWER
- 备用手纸架 BH 120 SPARE PAPER ROLL HOLDER
- 手纸架 BH 119 PAPER ROLL HOLDER
- 储物柜 BH 105 WATER CLOSET
- 挂衣钩 BH 121 ROBE HOOK
- 梳妆镜 BH 122 GROOMING MIRROR
- 排水瓶(底下) BH 103 BOTTLE TRAP (UNDER)
- 地漏(底下) BH 131 FLOOR TRAP (UNDER)
- 面盆龙头 BH 102 VANITY MIXER
- 洗脸盆 BH 101 VANITY BASIN
- 浴缸龙头 BH 110 BATH TUB MIXER SET I
- 挂衣杆 BH 123 CLOTHES LINE
- 浴缸 BH 108 BATHTUB I
- 毛巾架 BH 116 TOWEL RACK


NOTES:-
 - ALL HARDWARE, PLUMBING, FIXTURE & ACCESSORIES TO COMPLY WITH LOCAL STANDARDS.
 - ALL EQUIPMENT BY OTHERS (INCLUDED SAFES, PANTRY EQUIPMENT ETC.)

注:
 - 所有硬件、配管、装置 & 辅助部件依从地方标准。
 - 所有设备由其他人(包括 保险柜, 餐具室设备等。)

BATHROOM HARDWARE PLAN
 Scale 1 : 50 @ A3 / 1 : 25 @ A1
 卫浴器具平面图

PRELIMINARY 初步
 30/11/10

■ HIRSCH/BEDNER AND ASSOCIATES ■ DESIGN CONSULTANTS ■ 17/46 DOUGLAS ST MILTON ■ QLD 4064 AUSTRALIA ■ TEL 617 3858 5688 ■ FAX 617 3858 5699



HBA

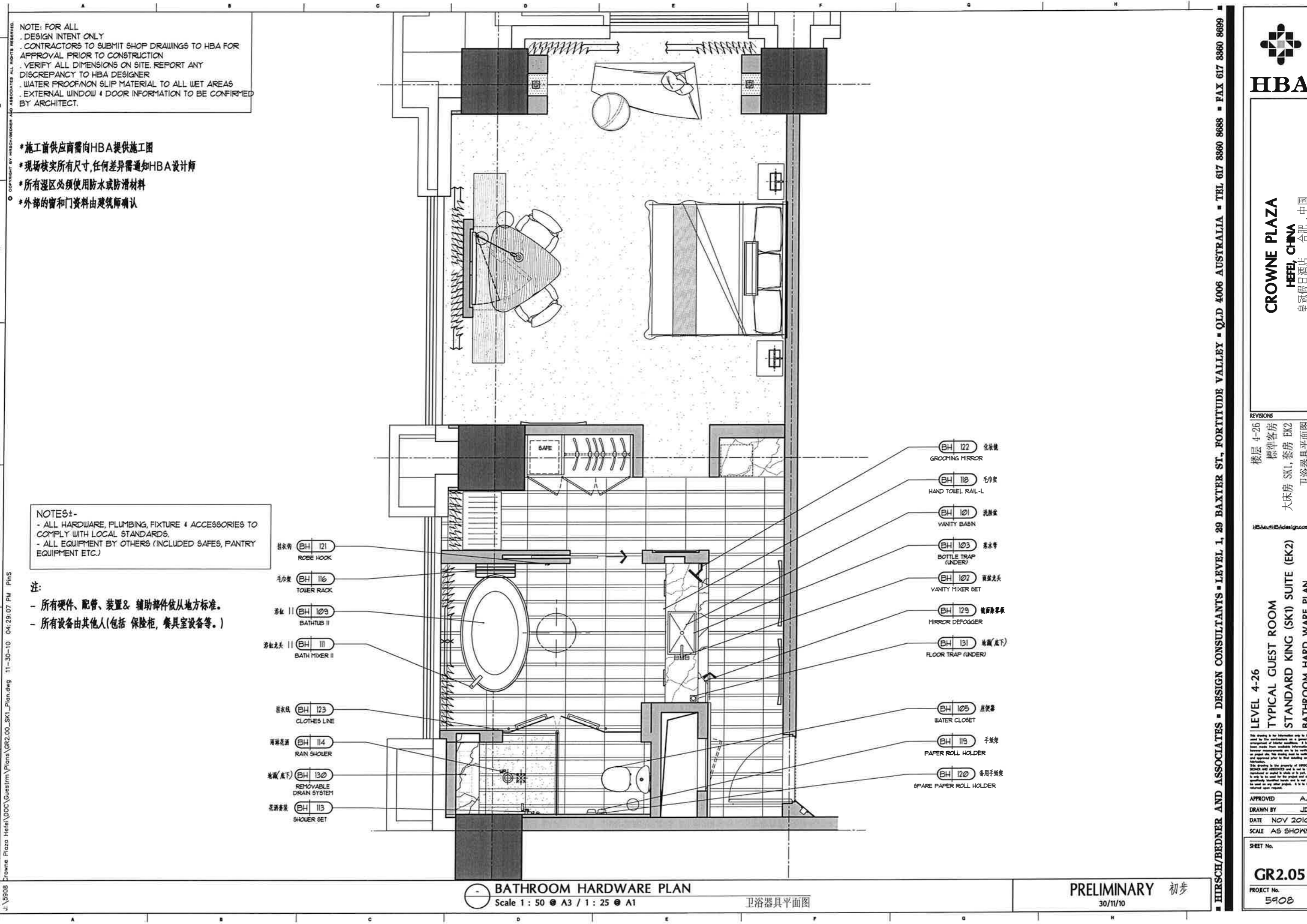
CROWNE PLAZA
HEFEI, CHINA
 皇冠假日酒店 合肥·中国

楼层 13-26
 标准客房
 标准大床房
 卫浴器具平面图

LEVEL 13-26
 TYPICAL GUESTROOM
 STANDARD KING (SK)
 BH PLAN

APPROVED A
 DRAWN BY KB
 DATE NOV 2010
 SCALE AS SHOWN

SHEET No.
GR1.05
 PROJECT No.
 5908



NOTE: FOR ALL
DESIGN INTENT ONLY
CONTRACTORS TO SUBMIT SHOP DRAWINGS TO HBA FOR
APPROVAL PRIOR TO CONSTRUCTION
VERIFY ALL DIMENSIONS ON SITE. REPORT ANY
DISCREPANCY TO HBA DESIGNER
WATER PROOF/ON SLIP MATERIAL TO ALL WET AREAS
EXTERNAL WINDOW & DOOR INFORMATION TO BE CONFIRMED
BY ARCHITECT.

- *施工前供应商需向HBA提供施工图
- *现场核实所有尺寸,任何差异需通知HBA设计师
- *所有湿区必须使用防水或防滑材料
- *外部的窗和门资料由建筑师确认

NOTES:-
- ALL HARDWARE, PLUMBING, FIXTURE & ACCESSORIES TO
COMPLY WITH LOCAL STANDARDS.
- ALL EQUIPMENT BY OTHERS (INCLUDED SAFES, PANTRY
EQUIPMENT ETC.)

- 注:
- 所有硬件、配管、装置 & 辅助部件依从地方标准。
 - 所有设备由其他人(包括 保险柜, 餐具室设备等。)

- 挂衣钩 BH 121 ROBE HOOK
- 毛巾架 BH 116 TOWEL RACK
- 浴缸 II BH 103 BATHUB II
- 浴缸龙头 II BH 111 BATH MIXER II
- 挂衣线 BH 123 CLOTHES LINE
- 雨淋花洒 BH 114 RAIN SHOWER
- 地漏(底下) BH 130 REMOVABLE DRAIN SYSTEM
- 花洒套装 BH 113 SHOWER SET

- BH 122 化妆镜 GROOMING MIRROR
- BH 118 毛巾架 HAND TOWEL RAIL-L
- BH 101 洗脸盆 VANITY BASIN
- BH 103 龙头等 BOTTLE TRAP (UNDER)
- BH 102 面盆龙头 VANITY MIXER SET
- BH 129 镜前除雾器 MIRROR DEFOGGER
- BH 131 地漏(底下) FLOOR TRAP (UNDER)
- BH 105 座便器 WATER CLOSET
- BH 119 手纸架 PAPER ROLL HOLDER
- BH 120 备用手纸架 SPARE PAPER ROLL HOLDER

BATHROOM HARDWARE PLAN
Scale 1: 50 @ A3 / 1: 25 @ A1
卫浴器具平面图

PRELIMINARY 初步
30/11/10

J:\9908 Crowne Plaza Hefei\Doc\Guestroom\Plns\GR2.00_SK1_Plan.dwg 11-30-10 04:29:07 PM PHS

HIRSCH/BEDNER AND ASSOCIATES ■ DESIGN CONSULTANTS ■ LEVEL 1, 29 BAXTER ST., FORTITUDE VALLEY ■ QLD 4006 AUSTRALIA ■ TEL 617 8360 8688 ■ FAX 617 8360 8699



HBA

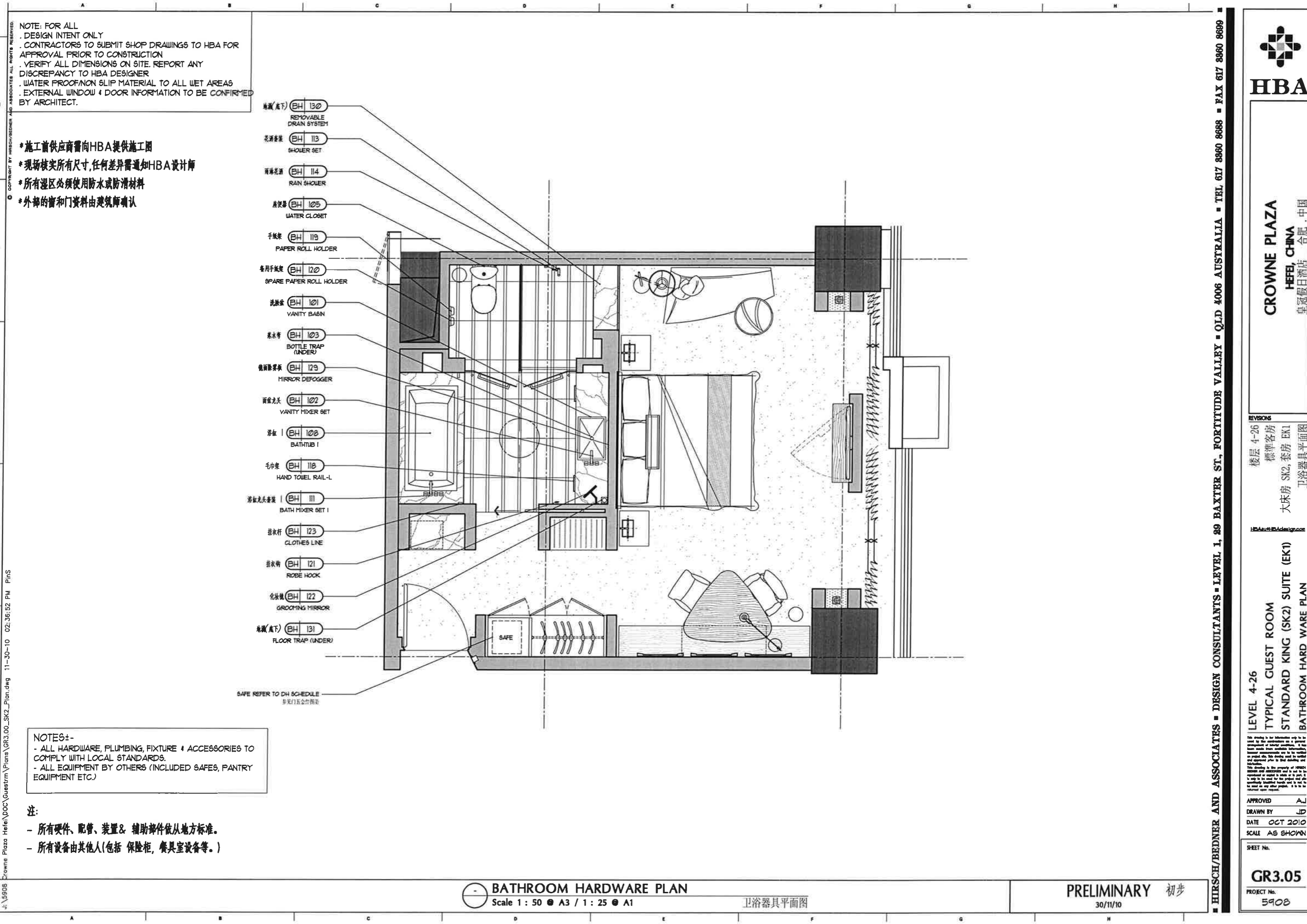
CROWNE PLAZA
HEFEI, CHINA
皇冠假日酒店 合肥·中国

楼层 4-26
标准客房
大床房 SK1, 套房 EK2
卫浴器具平面图

LEVEL 4-26
TYPICAL GUEST ROOM
STANDARD KING (SK1) SUITE (EK2)
BATHROOM HARD WARE PLAN

APPROVED A.L.
DRAWN BY L.D.
DATE NOV 2010
SCALE AS SHOWN

SHEET No.
GR2.05
PROJECT No.
5908



NOTE: FOR ALL
DESIGN INTENT ONLY
CONTRACTORS TO SUBMIT SHOP DRAWINGS TO HBA FOR
APPROVAL PRIOR TO CONSTRUCTION
VERIFY ALL DIMENSIONS ON SITE. REPORT ANY
DISCREPANCY TO HBA DESIGNER
WATER PROOF/NO SLIP MATERIAL TO ALL WET AREAS
EXTERNAL WINDOW & DOOR INFORMATION TO BE CONFIRMED
BY ARCHITECT.

- *施工前供应商需向HBA提供施工图
- *现场核实所有尺寸,任何差异需通知HBA设计师
- *所有湿区必须使用防水或防滑材料
- *外部的窗和门资料由建筑师确认

- 地漏(底下) BH 130
REMOVABLE
DRAIN SYSTEM
- 花洒套装 BH 113
SHOWER SET
- 雨淋花洒 BH 114
RAIN SHOWER
- 座便器 BH 105
WATER CLOSET
- 手纸架 BH 119
PAPER ROLL HOLDER
- 备用手纸架 BH 120
SPARE PAPER ROLL HOLDER
- 洗脸盆 BH 101
VANITY BASIN
- 瓶水带 BH 103
BOTTLE TRAP (UNDER)
- 镜前除雾器 BH 129
MIRROR DEFOGGER
- 面盆龙头 BH 102
VANITY MIXER SET
- 浴缸 BH 108
BATHTUB I
- 毛巾架 BH 118
HAND TOWEL RAIL-L
- 浴缸龙头套装 BH 111
BATH MIXER SET I
- 挂衣杆 BH 123
CLOTHES LINE
- 挂衣钩 BH 121
ROBE HOOK
- 化妆镜 BH 122
GROOMING MIRROR
- 地漏(底下) BH 131
FLOOR TRAP (UNDER)


SAFE REFER TO DH SCHEDULE
参见五金件附表

NOTES:-
- ALL HARDWARE, PLUMBING, FIXTURE & ACCESSORIES TO
COMPLY WITH LOCAL STANDARDS.
- ALL EQUIPMENT BY OTHERS (INCLUDED SAFES, PANTRY
EQUIPMENT ETC.)

- 注:
- 所有硬件、配管、装置 & 辅助部件依从地方标准。
 - 所有设备由其他人(包括 保险柜, 餐具室设备等。)

BATHROOM HARDWARE PLAN
Scale 1 : 50 ● A3 / 1 : 25 ● A1
卫浴器具平面图

PRELIMINARY 初步
30/11/10



HBA

CROWNE PLAZA
HEFEI, CHINA
皇冠假日酒店 - 合肥 - 中国

REVISIONS

楼层 4-26	标准客房
大床房 SK2, 套房 EK1	卫浴器具平面图

LEVEL 4-26
TYPICAL GUEST ROOM
STANDARD KING (SK2) SUITE (EK1)
BATHROOM HARD WARE PLAN

APPROVED
DRAWN BY
DATE OCT 2010
SCALE AS SHOWN

SHEET No.
GR3.05
PROJECT No.
5908

J:\5908\Crowne Plaza Hefe\DOC\Guestm\Plans\GR3.00_SK2_Plan.dwg 11-30-10 02:36:52 PM PHS

HIRSCH/BEDNER AND ASSOCIATES ■ DESIGN CONSULTANTS ■ LEVEL 1, 29 BAXTER ST., FORTITUDE VALLEY ■ QLD 4006 AUSTRALIA ■ TEL 617 8860 8688 ■ FAX 617 8860 8689

NOTE: FOR ALL
DESIGN INTENT ONLY
CONTRACTORS TO SUBMIT SHOP DRAWINGS TO HBA FOR
APPROVAL PRIOR TO CONSTRUCTION
VERIFY ALL DIMENSIONS ON SITE. REPORT ANY
DISCREPANCY TO HBA DESIGNER
WATER PROOF/NON SLIP MATERIAL TO ALL WET AREAS
EXTERNAL WINDOW & DOOR INFORMATION TO BE CONFIRMED
BY ARCHITECT.

- *施工前供应商需向HBA提供施工图
- *现场核实所有尺寸,任何差异需通知HBA设计师
- *所有湿区必须使用防水或防滑材料
- *外部的窗和门资料由建筑师确认

面盆龙头 BH 102
VANITY MIXER SET

排水器-无障碍 BH 104
BOTTLE TRAP-HANDICAP

洗脸盆 BH 101
VANITY BASIN

挂衣钩 BH 121
ROBE HOOK

I型扶手 BH 125
I-SHAPED GRAB BAR

座便器 BH 105
WATER CLOSET

L型扶手 BH 124
L-SHAPED GRAB BAR

双头手纸架 BH 119
PAPER ROLL HOLDER

后座双头手纸架 BH 120
SPARE PAPER ROLL HOLDER

SAFE REFER TO DH SCHEDULE
参见五金件图册

BH 103 地漏(底下)
FLOOR TRAP (UNDER)

BH 122 化妆镜
GROOMING MIRROR

BH 118 挂手毛巾架
HAND TOWEL RAIL-L

BH 130 地漏(底下)
REMOVABLE DRAIN SYSTEM

BH 116 毛巾架
TOWEL RACK

BH 125 I型扶手
I-SHAPED GRAB BAR

BH 126 淋浴坐
SHOWER SEAT

BH 114 雨淋花洒
RAIN SHOWER

BH 113 花洒喷头
SHOWER SET

BH 12 淋浴帘
SHOWER CURTAIN

BH 123 衣挂线
CLOTHES LINE

NOTES:-
- ALL HARDWARE, PLUMBING, FIXTURE & ACCESSORIES TO
COMPLY WITH LOCAL STANDARDS.
- ALL EQUIPMENT BY OTHERS (INCLUDED SAFES, PANTRY
EQUIPMENT ETC)

- 注:
- 所有硬件、配管、装置 & 辅助部件依从地方标准。
 - 所有设备由其他人(包括 保险柜, 餐具室设备等。)

BATHROOM HARDWARE PLAN
Scale 1 : 50 @ A3 / 1 : 25 @ A1

卫浴器具平面图

PRELIMINARY 初步
30/11/10



CROWNE PLAZA
HEFEI, CHINA
皇冠假日酒店 合肥·中国

楼层 4-6
标准客房
无障碍大客房 - 连接房
卫浴器具平面图

LEVEL 4-6
GUESTROOM
HANDICAP KING - CONNECTING (HK)
BH PLAN

APPROVED A
DRAWN BY KB
DATE NOV 2010
SCALE AS SHOWN

SHEET No.
GR5.05
PROJECT No.
5908

HIRSCH/BEDNER AND ASSOCIATES ■ DESIGN CONSULTANTS ■ 17/46 DOUGLAS ST MILTON ■ QLD 4064 AUSTRALIA ■ TEL 617 3050 5600 ■ FAX 617 3050 5699

NOTE: FOR ALL
DESIGN INTENT ONLY
CONTRACTORS TO SUBMIT SHOP DRAWINGS TO HBA FOR
APPROVAL PRIOR TO CONSTRUCTION
VERIFY ALL DIMENSIONS ON SITE. REPORT ANY
DISCREPANCY TO HBA DESIGNER
WATER PROOF/NON SLIP MATERIAL TO ALL WET AREAS
EXTERNAL WINDOW & DOOR INFORMATION TO BE CONFIRMED
BY ARCHITECT.

- *施工前供应商需向HBA提供施工图
- *现场核实所有尺寸,任何差异需通知HBA设计师
- *所有湿区必须使用防水或防滑材料
- *外部的窗和门资料由建筑师确认

化妆镜 (BH 122)
GROOMING MIRROR
排水口(底下) (BH 103)
BOTTLE TRAP (UNDER)
地漏(底下) (BH 131)
FLOOR TRAP (UNDER)
面盆龙头 (BH 102)
VANITY MIXER
洗脸盆 (BH 101)
VANITY BASIN

浴缸龙头 (BH 110)
BATH TUB MIXER SET I
挂衣杆 (BH 123)
CLOTHES LINE
浴缸 (BH 108)
BATH TUB I
毛巾架 (BH 116)
TOWEL RACK

(BH 129) 镜面除雾板
MIRROR DEFOGGER
(BH 130) 地漏(底下)
REMOVABLE DRAIN SYSTEM
(BH 117) 手巾架-5
HAND TOWEL RAIL-5
(BH 113) 淋浴龙头组
SHOWER SET
(BH 114) 雨淋花洒
RAIN SHOWER
(BH 120) 备用手纸架
SPARE PAPER ROLL HOLDER
(BH 119) 手纸架
PAPER ROLL HOLDER

(BH 105) 座便器
WATER CLOSET
(BH 121) 挂衣钩
ROBE HOOK

SAFE REFER TO DH SCHEDULE
参见五金件图例

BATHROOM HARDWARE PLAN
Scale 1 : 50 ● A3 / 1 : 25 ● A1

卫浴器具平面图

PRELIMINARY 初步
30/11/10



CROWNE PLAZA
HEFEI, CHINA
皇冠假日酒店 合肥·中国

楼层 4-6, 23-24, 26
标准客房
标准客房 - 连接房
卫浴器具平面图

HBA Australia Pty Ltd

LEVEL 13-26
TYPICAL GUESTROOM
STANDARD TWIN - CONNECTING (STC) 标准双床房 - 连接房
BH PLAN

APPROVED A
DRAWN BY KB
DATE NOV 2010
SCALE AS SHOWN

SHEET No.
GR6.05
PROJECT No.
5908

HIRSCH/BEDNER AND ASSOCIATES ■ DESIGN CONSULTANTS ■ 17/46 DOUGLAS ST MILTON ■ QLD 4064 AUSTRALIA ■ TEL 617 3858 5688 ■ FAX 617 3858 5699

SCHEDULE



HBA

HIRSCH/BEDNER
ASSOCIATES
DESIGN CONSULTANTS

17/ 46 DOUGLAS ST.
MILTON 4064
QUEENSLAND
AUSTRALIA
FAX 62.3858.5699
■ TEL 617.3858.5688 ■
www.HBAdesign.com

Bath & Room Hardware

Ref. No.	Item	Qty.	Unit	Rev.
BH-101	Vanity Basin	455	Each	
BH-102	Vanity Mixer Set	455	Each	
BH-103	Bottle Trap	452	Each	
BH-104	Bottle Trap - Handicap	3	Each	
BH-105	Water Closet	455	Each	
BH-106	...Open...			
BH-107	...Open...			
BH-108	Bathtub I	394	Each	
BH-109	Bathtub II	58	Each	
BH-110	Bathtub Mixer Set I	394	Sets	
BH-111	Bathtub Mixer Set II	58	Set	
BH-112	...Open...			
BH-113	Shower Set	455	Sets	
BH-114	Rain Shower	455	Each	
BH-115	...Open...			
BH-116	Towel Rack	455	Each	
BH-117	Hand Towel Rail - S	700	Each	
BH-118	Hand Towel Rail - L	210	Each	
BH-119	Paper Roll Holder	455	Each	
BH-120	Spare Paper Roll Holder	455	Each	
BH-121	Robe Hook	455	Each	

Issued: 30-Nov-10

Project

Crowne Plaza He Fei

Area:

Guestroom Sanitary

Project No.	5908
Series	100
Type	BH

Bath & Room Hardware

Ref. No.	Item	Qty.	Unit	Rev.
BH-122	Grooming Mirror	455	Each	
BH-123	Clothesline	455	Each	
BH-124	L-Shaped Grab Bar	3	Sets	
BH-125	I-Shaped Grab Bar	6	Sets	
BH-126	Shower Seat - Handicap	3	Each	
BH-127	Shower Curtain - Handicap	3	Each	
BH-127.1	Fabric @ Shower Curtain		Meter	
BH-128	...Open...			
BH-129	Mirror Defogger	455	Each	
BH-130	Drain System	455	Each	
BH-131	Floor Trap	455	Each	

**HBA**HIRSCH/BEDNER
ASSOCIATES
DESIGN CONSULTANTS17/ 46 DOUGLAS ST.
MILTON 4064
QUEENSLAND
AUSTRALIA
FAX 62.3858.5699
■ TEL 617.3858.5688 ■
www.HBAdesign.com

Issued: 30-Nov-10

Project

Crowne Plaza He Fei

Area:

Guestroom Sanitary

Project No.	5908
Series	100
Type	BH

Project

Area

REVISÉ
Issued: 30-Nov-10

Project No.	5908
-------------	------

Series 100

Type	BH
------	----

DISTRIBUTION REPORT

[illegible]

REVISED
30-Nov-10



**HBA/HIRSCH BEDNER ASSOCIATES
DESIGN CONSULTANTS**
LEVEL 1, 29 BAXTER ST., FORTITUDE VALLEY
QUEENSLAND, 4006, AUSTRALIA
T: 61.7.3360.8688 F: 61.7.3360.8699

Project

Crowne Plaza He Fei

Area

Guestroom Sanitary

Project No.	5908
Series	100
Type	BH

DISTRIBUTION REPORT

[illegible]

REVISÉ
Issued: 30-Nov-10



HBA/HIRSCH BEDNER ASSOCIATES
DESIGN CONSULTANTS
LEVEL 1, 29 BAXTER ST., FORTITUDE VALLEY
QUEENSLAND, 4006, AUSTRALIA
T: 61.7.3360.8688 F: 61.7.3360.8699

Project

Crowne Plaza He Fei

Area

Guestroom Sanitary

Project No.	5908
Series	100
Type	BH

SPECIFICATION



HBA

HIRSCH/BEDNER
ASSOCIATES
DESIGN CONSULTANTS

17/ 46 DOUGLAS ST.
MILTON 4064
QUEENSLAND
AUSTRALIA
FAX 62.3858.5699
TEL 617.3858.5688
www.HBAdesign.com

Mfg. Toto (East China)
延安西路 2201号
上海国际贸易中心210室
Shanghai, China
www.toto.com.cn

T +86 21 6270 1010 #161
F +86 21 6270 3099 #161
c Liang Chen 陳良
e chenliang@toto.com.cn

Rep. Toto (East China)
延安西路 2201号
上海国际贸易中心210室
Shanghai, China
www.toto.com.cn

T +86 21 6270 1010 #161
F +86 21 6270 3099 #161
c Liang Chen 陳良
e chenliang@toto.com.cn

MUST BE OF CONTRACT QUALITY AND SUITABLE FOR COMMERCIAL
USE. FABRICATION TO BE IN ACCORDANCE WITH HBA PREAMBLES
(www.hbadesign.com/preambles.html) AND AS FOLLOWS:

1. Description描述: Vanity Basin.
2. Location: Bathroom. Refer to Plans and Elevations for exact locations and quantities.
位置: 浴室. 確切安裝位置及數量請參閱平面及立面圖.
3. Refer to BHX-101 for details.
有关设计概念, 参阅BHX-101.
4. Model模型: LW645J.
5. Dimensions尺寸: 660mm W x 420mm D x 75mm H.
6. Finish材質: White.
7. Manufacturer to submit sample to HBA for approval prior to production.
制造前, 制造商必须呈交样板给于 H B A 批准。
8. Shipping: Must be sufficiently crated/packed/ taped to prevent any damage or breakages.
运输: 必须恰当的箱起/包扎/粘起以防任何的破裂。
9. Must be contract quality and suitable for commercial use.
必须是符合合约的水准并适合商业用途。
10. All item quantites are to be confirmed by operator on site prior to construction.
制造商必须於動工前确认所有数量的需求。
11. All custom designed materials must be coordinated and confirmed by HBA prior to fabrication
by contractor.
任何訂製材料務必在承包商製作前與 HBA 協調及最後設計確認。

Issued: 30-Nov-10

Project

Crowne Plaza He Fei

Area:

Guestroom Sanitary

Item:

Vanity Basin

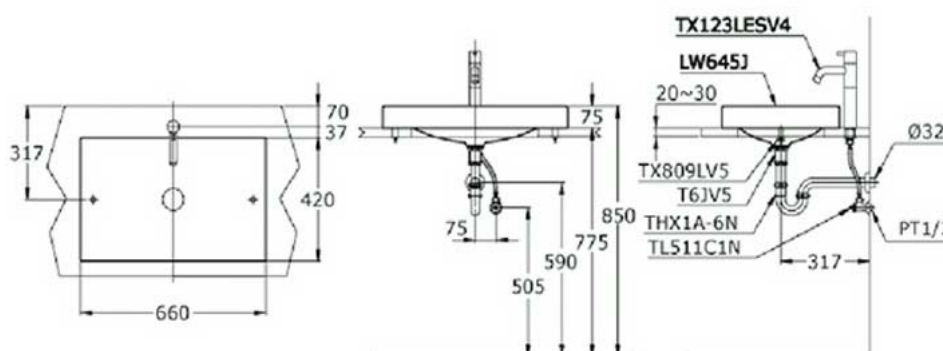
Project	5908
Qty.	455 Each
Item No.	BH-101



HBA

HIRSCH/BEDNER
ASSOCIATES
DESIGN CONSULTANTS

17/ 46 DOUGLAS ST.
MILTON 4064
QUEENSLAND
AUSTRALIA
FAX 62.3858.5699
■ TEL 617.3858.5688 ■
www.HBAdesign.com



Issued: 30-Nov-10

Project

Crowne Plaza He Fei

Area:

Guestroom Sanitary

Item:

Vanity Basin

Project	5908
Scale	NTS
By	PS
Item No.	BHX-101

SPECIFICATION



HBA

HIRSCH/BEDNER
ASSOCIATES
DESIGN CONSULTANTS

17/ 46 DOUGLAS ST.
MILTON 4064
QUEENSLAND
AUSTRALIA
FAX 62.3858.5699
TEL 617.3858.5688
www.HBAdesign.com

Mfg. Toto (East China)
延安西路 2201号
上海国际贸易中心210室
Shanghai, China
www.toto.com.cn

T +86 21 6270 1010 #161
F +86 21 6270 3099 #161
c Liang Chen 陳良
e chenliang@toto.com.cn

Rep. Toto (East China)
延安西路 2201号
上海国际贸易中心210室
Shanghai, China
www.toto.com.cn

T +86 21 6270 1010 #161
F +86 21 6270 3099 #161
c Liang Chen 陳良
e chenliang@toto.com.cn

MUST BE OF CONTRACT QUALITY AND SUITABLE FOR COMMERCIAL
USE. FABRICATION TO BE IN ACCORDANCE WITH HBA PREAMBLES
(www.hbadesign.com/preambles.html) AND AS FOLLOWS:

1. Description描述: Vanity Mixer Set.
2. Location: Bathroom. Refer to Plans and Elevations for exact locations and quantities.
位置: 浴室. 確切安裝位置及數量請參閱平面及立面圖.
3. Refer to BHX-102 for details.
有关设计概念, 参阅BHX-102.
4. Model模型: DL346.
5. Dimensions尺寸: As per manufacturer.
6. Finish材質: Polished Chrome.
7. Manufacturer to submit sample to HBA for approval prior to production.
制造前, 制造商必须呈交样板给于HBA批准。
8. Shipping: Must be sufficiently crated/packed/ taped to prevent any damage or breakages.
运输: 必须恰当的箱起/包扎/粘起以防任何的破裂。
9. Must be contract quality and suitable for commercial use.
必须是符合合约的水准并适合商业用途。
10. All item quantites are to be confirmed by operator on site prior to construction.
制造商必须於動工前确认所有数量的需求。
11. All custom designed materials must be coordinated and confirmed by HBA prior to fabrication
by contractor.
任何訂製材料務必在承包商製作前與HBA協調及最後設計確認。

Issued: 30-Nov-10

Project

Crowne Plaza He Fei

Area:

Guestroom Sanitary

Item:

Vanity Mixer Set

Project	5908
Qty.	455 Each
Item No.	BH-102

TOTO

单孔单柄混合
水龙头

型号
DL346



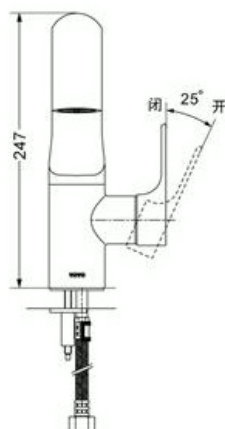
HBA

HIRSCH/BEDNER
ASSOCIATES
DESIGN CONSULTANTS

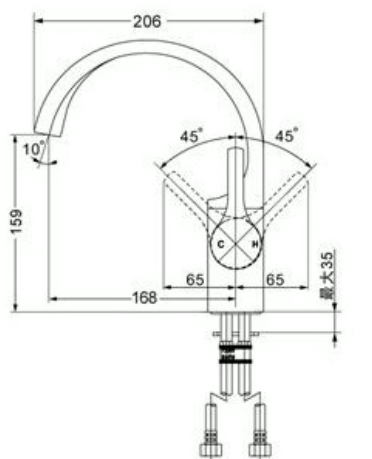
17/ 46 DOUGLAS ST.
MILTON 4064
QUEENSLAND
AUSTRALIA
FAX 62.3858.5699
■ TEL 617.3858.5688 ■
www.HBAdesign.com

产品介绍

DL346
单孔单柄混合水龙头
新月系列



*龙头安装孔为Ø35



()建议安装尺寸

*TOTO公司保留对其产品规格和尺寸更改的权利, 届时, 恕不另行通知

Issued: 30-Nov-10

Project

Crowne Plaza He Fei

Area:

Guestroom Sanitary

Item:

Vanity Mixer Set

Project	5908
Scale	NTS
By	PS
Item No.	BHX-102

SPECIFICATION



HBA

HIRSCH/BEDNER
ASSOCIATES
DESIGN CONSULTANTS

17/ 46 DOUGLAS ST.
MILTON 4064
QUEENSLAND
AUSTRALIA
FAX 62.3858.5699
TEL 617.3858.5688
www.HBAdesign.com

Mfg. Toto (East China)
延安西路 2201号
上海国际贸易中心210室
Shanghai, China
www.toto.com.cn

T +86 21 6270 1010 #161
F +86 21 6270 3099 #161
c Liang Chen 陳良
e chenliang@toto.com.cn

Rep. Toto (East China)
延安西路 2201号
上海国际贸易中心210室
Shanghai, China
www.toto.com.cn

T +86 21 6270 1010 #161
F +86 21 6270 3099 #161
c Liang Chen 陳良
e chenliang@toto.com.cn

MUST BE OF CONTRACT QUALITY AND SUITABLE FOR COMMERCIAL
USE. FABRICATION TO BE IN ACCORDANCE WITH HBA PREAMBLES
(www.hbadesign.com/preambles.html) AND AS FOLLOWS:

1. Description描述: Bottle Trap.
2. Location: Bathroom. Refer to Plans and Elevations for exact locations and quantities.
位置: 浴室. 確切安裝位置及數量請參閱平面及立面圖.
3. Refer to BHX-103 for details.
有关设计概念, 参阅BHX-103.
4. Model模型: DL501B.
5. Dimensions尺寸: As per manufacturer.
6. Finish材質: Polished Chrome.
7. Manufacturer to submit sample to HBA for approval prior to production.
制造前, 制造商必须呈交样板给于HBA批准。
8. Shipping: Must be sufficiently crated/packed/ taped to prevent any damage or breakages.
运输: 必须恰当的箱起/包扎/粘起以防任何的破裂。
9. Must be contract quality and suitable for commercial use.
必须是符合合约的水准并适合商业用途。
10. All item quantites are to be confirmed by operator on site prior to construction.
制造商必须於動工前确认所有数量的需求。
11. All custom designed materials must be coordinated and confirmed by HBA prior to fabrication
by contractor.
任何訂製材料務必在承包商製作前與HBA協調及最後設計確認。

Issued: 30-Nov-10

Project

Crowne Plaza He Fei

Area:

Guestroom Sanitary

Item:

Bottle Trap

Project

5908

Qty.

452 Each

Item
No.

BH-103

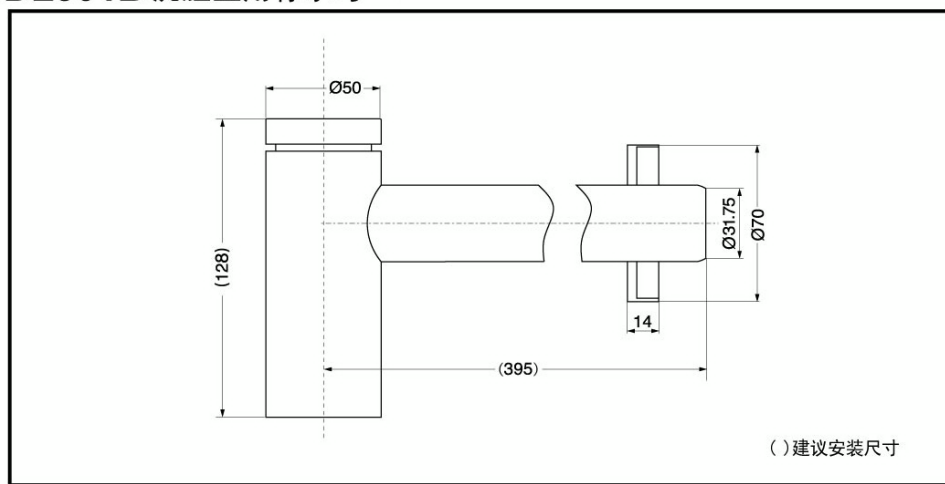


HBA

HIRSCH/BEDNER
ASSOCIATES
DESIGN CONSULTANTS

17/ 46 DOUGLAS ST.
MILTON 4064
QUEENSLAND
AUSTRALIA
FAX 62.3858.5699
■ TEL 617.3858.5688 ■
www.HBAdesign.com

DL501B 洗脸盆用存水弯



*TOTO公司保留对其产品规格和尺寸更改的权利。届时，恕不另行通知。

Issued: 30-Nov-10

Project

Crowne Plaza He Fei

Area:

Guestroom Sanitary

Item:

Bottle Trap

Project	5908
Scale	NTS
By	PS
Item No.	BHX-103

SPECIFICATION



HBA

HIRSCH/BEDNER
ASSOCIATES
DESIGN CONSULTANTS

17/ 46 DOUGLAS ST.
MILTON 4064
QUEENSLAND
AUSTRALIA
FAX 62.3858.5699
TEL 617.3858.5688
www.HBAdesign.com

Mfg. Toto (East China)
延安西路 2201号
上海国际贸易中心210室
Shanghai, China
www.toto.com.cn

T +86 21 6270 1010 #161
F +86 21 6270 3099 #161
c Liang Chen 陳良
e chenliang@toto.com.cn

Rep. Toto (East China)
延安西路 2201号
上海国际贸易中心210室
Shanghai, China
www.toto.com.cn

T +86 21 6270 1010 #161
F +86 21 6270 3099 #161
c Liang Chen 陳良
e chenliang@toto.com.cn

MUST BE OF CONTRACT QUALITY AND SUITABLE FOR COMMERCIAL
USE. FABRICATION TO BE IN ACCORDANCE WITH HBA PREAMBLES
(www.hbadesign.com/preambles.html) AND AS FOLLOWS:

1. Description描述: Bottle Trap.
2. Location: Bathroom. Refer to Plans and Elevations for exact locations and quantities.
位置: 浴室. 確切安裝位置及數量請參閱平面及立面圖.
3. Refer to BHX-104 for details.
有关设计概念, 参阅BHX-104.
4. Model模型: B08034C.
5. Dimensions尺寸: As per manufacturer.
6. Finish材質: White.
7. Manufacturer to submit sample to HBA for approval prior to production.
制造前, 制造商必须呈交样板给于HBA批准。
8. Shipping: Must be sufficiently crated/packed/ taped to prevent any damage or breakages.
运输: 必须恰当的箱起/包扎/粘起以防任何的破裂。
9. Must be contract quality and suitable for commercial use.
必须是符合合约的水准并适合商业用途。
10. All item quantites are to be confirmed by operator on site prior to construction.
制造商必须於動工前确认所有数量的需求。
11. All custom designed materials must be coordinated and confirmed by HBA prior to fabrication
by contractor.
任何訂製材料務必在承包商製作前與HBA協調及最後設計確認。

Issued: 30-Nov-10

Project

Crowne Plaza He Fei

Area:

Guestroom Sanitary

Item:

Bottle Trap - Handicap

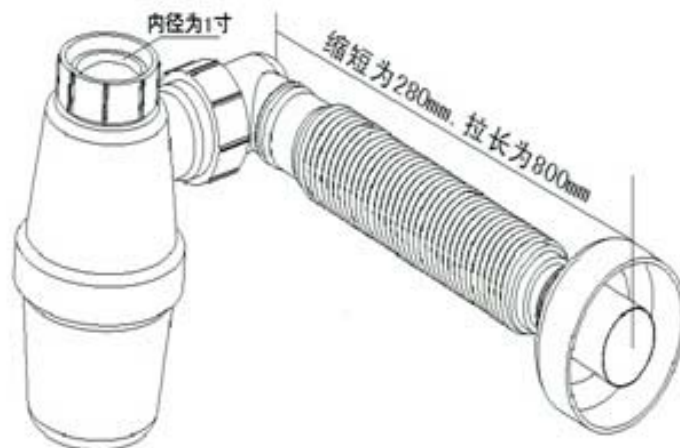
Project	5908
Qty.	3 Each
Item No.	BH-104



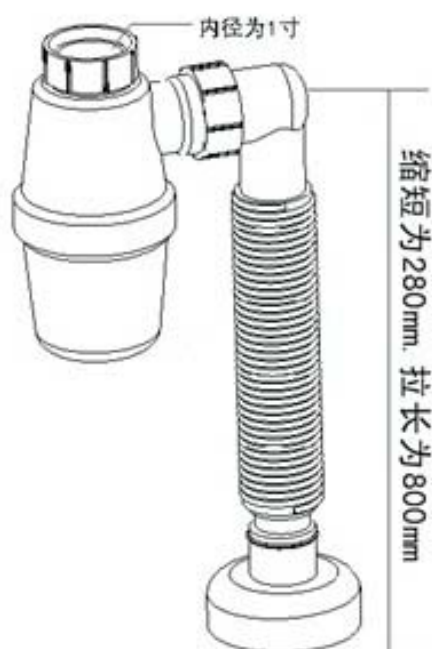
HBA

HIRSCH/BEDNER
ASSOCIATES
DESIGN CONSULTANTS

17/ 46 DOUGLAS ST.
MILTON 4064
QUEENSLAND
AUSTRALIA
FAX 62.3858.5699
■ TEL 617.3858.5688 ■
www.HBAdesign.com



(1) B08034C 墙排



(2) B08034C 地排

Issued: 30-Nov-10

Project

Crowne Plaza He Fei

Area:

Guestroom Sanitary

Item:

Bottle Trap - Handicap

Project	5908
Scale	NTS
By	PS
Item No.	BHX-104

SPECIFICATION



HBA

HIRSCH/BEDNER
ASSOCIATES
DESIGN CONSULTANTS

17/ 46 DOUGLAS ST.
MILTON 4064
QUEENSLAND
AUSTRALIA
FAX 62.3858.5699
TEL 617.3858.5688
www.HBAdesign.com

Mfg. Toto (East China)
延安西路 2201号
上海国际贸易中心210室
Shanghai, China
www.toto.com.cn

T +86 21 6270 1010 #161
F +86 21 6270 3099 #161
c Liang Chen 陳良
e chenliang@toto.com.cn

Rep. Toto (East China)
延安西路 2201号
上海国际贸易中心210室
Shanghai, China
www.toto.com.cn

T +86 21 6270 1010 #161
F +86 21 6270 3099 #161
c Liang Chen 陳良
e chenliang@toto.com.cn

MUST BE OF CONTRACT QUALITY AND SUITABLE FOR COMMERCIAL
USE. FABRICATION TO BE IN ACCORDANCE WITH HBA PREAMBLES
(www.hbadesign.com/preambles.html) AND AS FOLLOWS:

1. Description描述: Water Closet.
2. Location: Bathroom. Refer to Plans and Elevations for exact locations and quantities.
位置: 浴室. 確切安裝位置及數量請參閱平面及立面圖.
3. Refer to BHX-105 for details.
有关设计概念, 参阅BHX-105.
4. Model模型: CW981NB.
5. Dimensions尺寸: As per manufacturer.
6. Finish材質: White.
7. Manufacturer to submit sample to HBA for approval prior to production.
制造前, 制造商必须呈交样板给于 H B A 批准。
8. Shipping: Must be sufficiently crated/packed/ taped to prevent any damage or breakages.
运输: 必须恰当的箱起/包扎/粘起以防任何的破裂。
9. Must be contract quality and suitable for commercial use.
必须是符合合约的水准并适合商业用途。
10. All item quantites are to be confirmed by operator on site prior to construction.
制造商必须於動工前确认所有数量的需求。
11. All custom designed materials must be coordinated and confirmed by HBA prior to fabrication
by contractor.
任何訂製材料務必在承包商製作前與 HBA 協調及最後設計確認。

Issued: 30-Nov-10

Project

Crowne Plaza He Fei

Area:

Guestroom Sanitary

Item:

Water Closet

Project

5908

Qty.

455 Each

Item
No.

BH-105

TOTO

分体坐便器

型号

CW981NB/SW981B



HBA

HIRSCH/BEDNER
ASSOCIATES
DESIGN CONSULTANTS

17/ 46 DOUGLAS ST.
MILTON 4064
QUEENSLAND
AUSTRALIA
FAX 62.3858.5699
TEL 617.3858.5688
www.HBAdesign.com

产品介绍:

CW981NB/SW981B (坑距305mm)

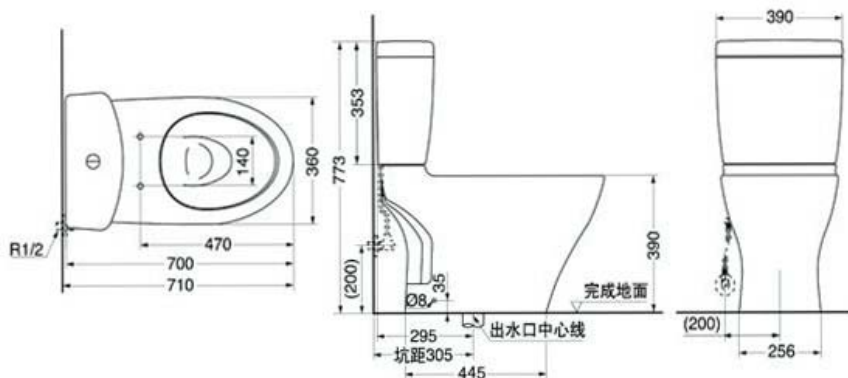
分体式坐便器 (加长型)

700×390×773mm

3/6L大小切换

智洁

太平洋系列



() 建议安装尺寸

*TOTO公司保留对其产品规格和尺寸更改的权利, 届时, 恕不另行通知

Issued: 30-Nov-10

Project

Crowne Plaza He Fei

Area:

Guestroom Sanitary

Item:

Water Closet

Project	5908
Scale	NTS
By	PS
Item No.	BHX-105

SPECIFICATION



HBA

HIRSCH/BEDNER
ASSOCIATES
DESIGN CONSULTANTS

17/ 46 DOUGLAS ST.
MILTON 4064
QUEENSLAND
AUSTRALIA
FAX 62.3858.5699
TEL 617.3858.5688
www.HBAdesign.com

Mfg. Toto (East China)
延安西路 2201号
上海国际贸易中心210室
Shanghai, China
www.toto.com.cn

T +86 21 6270 1010 #161
F +86 21 6270 3099 #161
c Liang Chen 陳良
e chenliang@toto.com.cn

Rep. Toto (East China)
延安西路 2201号
上海国际贸易中心210室
Shanghai, China
www.toto.com.cn

T +86 21 6270 1010 #161
F +86 21 6270 3099 #161
c Liang Chen 陳良
e chenliang@toto.com.cn

MUST BE OF CONTRACT QUALITY AND SUITABLE FOR COMMERCIAL
USE. FABRICATION TO BE IN ACCORDANCE WITH HBA PREAMBLES
(www.hbadesign.com/preambles.html) AND AS FOLLOWS:

1. Description描述: Bathtub I.
2. Location: Bathroom. Refer to Plans and Elevations for exact locations and quantities.
位置: 浴室. 確切安裝位置及數量請參閱平面及立面圖.
3. Refer to BHX-108 for details.
有关设计概念, 参阅BHX-108.
4. Model模型: FBY1650HD.
5. Dimensions尺寸: 1600mm WL x 800mm D x 590mm H.
6. Finish材質: White.
7. Manufacturer to submit sample to HBA for approval prior to production.
制造前, 制造商必须呈交样板给于HBA批准。
8. Shipping: Must be sufficiently crated/packed/ taped to prevent any damage or breakages.
运输: 必须恰当的箱起/包扎/粘起以防任何的破裂。
9. Must be contract quality and suitable for commercial use.
必须是符合合约的水准并适合商业用途。
10. All item quantites are to be confirmed by operator on site prior to construction.
制造商必须於動工前确认所有数量的需求。
11. All custom designed materials must be coordinated and confirmed by HBA prior to fabrication
by contractor.
任何訂製材料務必在承包商製作前與HBA協調及最後設計確認。

Issued: 30-Nov-10

Project

Crowne Plaza He Fei

Area:

Guestroom Sanitary

Item:

Bathtub I

Project

5908

Qty.

394 Each

Item
No.

BH-108



HBA

HIRSCH/BEDNER
ASSOCIATES
DESIGN CONSULTANTS

17/ 46 DOUGLAS ST.
MILTON 4064
QUEENSLAND
AUSTRALIA
FAX 62.3858.5699
■ TEL 617.3858.5688 ■
www.HBAdesign.com

TOTO

无裙铸铁浴缸

型号

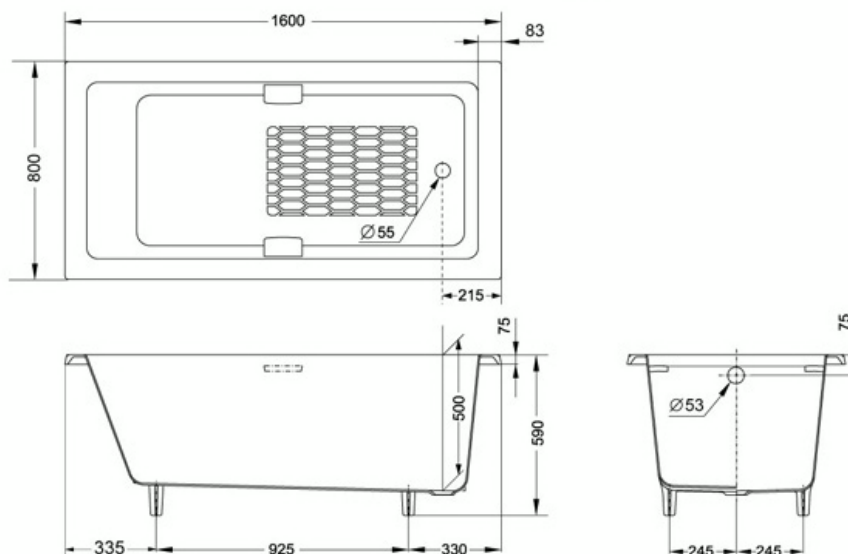
FBY1650HD

产品介绍

FBY1650HD

无裙铸铁浴缸

有扶手，深型浴缸



*TOTO公司保留对其产品规格和尺寸更改的权利，届时，恕不另行通知

Issued: 30-Nov-10

Project

Crowne Plaza He Fei

Area:

Guestroom Sanitary

Item:

Bathtub I

Project	5908
Scale	NTS
By	PS
Item No.	BHX-108

SPECIFICATION



HBA

HIRSCH/BEDNER
ASSOCIATES
DESIGN CONSULTANTS

17/ 46 DOUGLAS ST.
MILTON 4064
QUEENSLAND
AUSTRALIA
FAX 62.3858.5699
TEL 617.3858.5688
www.HBAdesign.com

Mfg. Toto (East China)
延安西路 2201号
上海国际贸易中心210室
Shanghai, China
www.toto.com.cn

T +86 21 6270 1010 #161
F +86 21 6270 3099 #161
c Liang Chen 陳良
e chenliang@toto.com.cn

Rep. Toto (East China)
延安西路 2201号
上海国际贸易中心210室
Shanghai, China
www.toto.com.cn

T +86 21 6270 1010 #161
F +86 21 6270 3099 #161
c Liang Chen 陳良
e chenliang@toto.com.cn

MUST BE OF CONTRACT QUALITY AND SUITABLE FOR COMMERCIAL
USE. FABRICATION TO BE IN ACCORDANCE WITH HBA PREAMBLES
(www.hbadesign.com/preambles.html) AND AS FOLLOWS:

1. Description描述: Bathtub II.
2. Location: Bathroom. Refer to Plans and Elevations for exact locations and quantities.
位置: 浴室. 確切安裝位置及數量請參閱平面及立面圖.
3. Refer to BHX-109 for details.
有关设计概念, 参阅BHX-109.
4. Model模型: PJY1804HPW(GW).
5. Dimensions尺寸: 1800mm W x 850mm D x 585mm H.
6. Finish材質: White.
7. Manufacturer to submit sample to HBA for approval prior to production.
制造前, 制造商必须呈交样板给于 H B A 批准。
8. Shipping: Must be sufficiently crated/packed/ taped to prevent any damage or breakages.
运输: 必须恰当的箱起/包扎/粘起以防任何的破裂。
9. Must be contract quality and suitable for commercial use.
必须是符合合约的水准并适合商业用途。
10. All item quantites are to be confirmed by operator on site prior to construction.
制造商必须於動工前确认所有数量的需求。
11. All custom designed materials must be coordinated and confirmed by HBA prior to fabrication
by contractor.
任何訂製材料務必在承包商製作前與 HBA 協調及最後設計確認。

Issued: 30-Nov-10

Project

Crowne Plaza He Fei

Area:

Guestroom Sanitary

Item:

Bathtub II

Project

5908

Qty.

58 Each

Item
No.

BH-109



HBA

HIRSCH/BEDNER
ASSOCIATES
DESIGN CONSULTANTS

17/ 46 DOUGLAS ST.
MILTON 4064
QUEENSLAND
AUSTRALIA
FAX 62.3858.5699
■ TEL 617.3858.5688 ■
www.HBAdesign.com

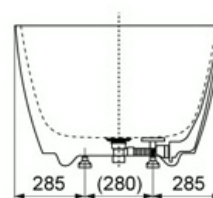
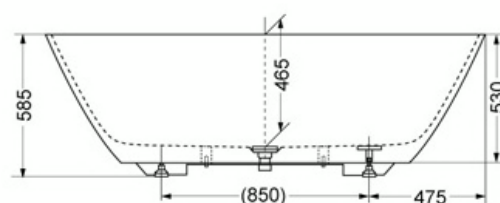
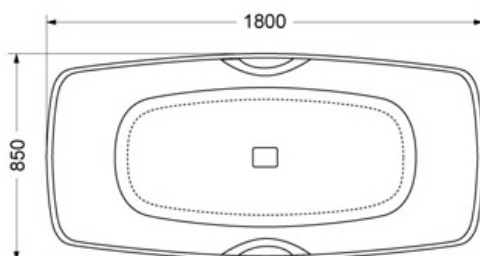
TOTO

雅晶浴缸

型号
PJY1804HPW(GW)

产品介绍

PJY1804HPW(GW)
雅晶浴缸
有扶手
已安装脚踏式排水金具



() 建议安装尺寸

*TOTO公司保留对其产品规格和尺寸更改的权利，届时，恕不另行通知

Issued: 30-Nov-10

Project

Crowne Plaza He Fei

Area:

Guestroom Sanitary

Item:

Bathtub II

Project	5908
Scale	NTS
By	PS
Item No.	BHX-109

SPECIFICATION



HBA

HIRSCH/BEDNER
ASSOCIATES
DESIGN CONSULTANTS

17/ 46 DOUGLAS ST.
MILTON 4064
QUEENSLAND
AUSTRALIA
FAX 62.3858.5699
TEL 617.3858.5688
www.HBAdesign.com

Mfg. Toto (East China)
延安西路 2201号
上海国际贸易中心210室
Shanghai, China
www.toto.com.cn

T +86 21 6270 1010 #161
F +86 21 6270 3099 #161
c Liang Chen 陳良
e chenliang@toto.com.cn

Rep. Toto (East China)
延安西路 2201号
上海国际贸易中心210室
Shanghai, China
www.toto.com.cn

T +86 21 6270 1010 #161
F +86 21 6270 3099 #161
c Liang Chen 陳良
e chenliang@toto.com.cn

MUST BE OF CONTRACT QUALITY AND SUITABLE FOR COMMERCIAL
USE. FABRICATION TO BE IN ACCORDANCE WITH HBA PREAMBLES
(www.hbadesign.com/preambles.html) AND AS FOLLOWS:

1. Description描述: Bathtub Mixer Set I.
2. Location: Bathroom. Refer to Plans and Elevations for exact locations and quantities.
位置: 浴室. 確切安裝位置及數量請參閱平面及立面圖.
3. Refer to BHX-110 for details.
有关设计概念, 参阅BHX-110.
4. Model模型: DB235C.
5. Dimensions尺寸: As per manufacturer.
6. Finish材質: Polished Chrome.
7. Manufacturer to submit sample to HBA for approval prior to production.
制造前, 制造商必须呈交样板给于HBA批准。
8. Shipping: Must be sufficiently crated/packed/ taped to prevent any damage or breakages.
运输: 必须恰当的箱起/包扎/粘起以防任何的破裂。
9. Must be contract quality and suitable for commercial use.
必须是符合合约的水准并适合商业用途。
10. All item quantites are to be confirmed by operator on site prior to construction.
制造商必须於動工前确认所有数量的需求。
11. All custom designed materials must be coordinated and confirmed by HBA prior to fabrication
by contractor.
任何訂製材料務必在承包商製作前與HBA協調及最後設計確認。

Issued: 30-Nov-10

Project

Crowne Plaza He Fei

Area:

Guestroom Sanitary

Item:

Bathtub Mixer Set I

Project	5908
Qty.	394 Sets
Item No.	BH-110



HBA

HIRSCH/BEDNER
ASSOCIATES
DESIGN CONSULTANTS

17/ 46 DOUGLAS ST.
MILTON 4064
QUEENSLAND
AUSTRALIA
FAX 62.3858.5699
■ TEL 617.3858.5688 ■
www.HBAdesign.com



DB235C

• 浴缸用4孔混合龙头



新月花洒多种出水示意图

Issued: 30-Nov-10

Project

Crowne Plaza He Fei

Area:

Guestroom Sanitary

Item:

Bathtub Mixer Set I

Project	5908
Scale	NTS
By	PS
Item No.	BHX-110

SPECIFICATION



HBA

HIRSCH/BEDNER
ASSOCIATES
DESIGN CONSULTANTS

17/ 46 DOUGLAS ST.
MILTON 4064
QUEENSLAND
AUSTRALIA
FAX 62.3858.5699
TEL 617.3858.5688
www.HBAdesign.com

Mfg. Toto (East China)
延安西路 2201号
上海国际贸易中心210室
Shanghai, China
www.toto.com.cn

T +86 21 6270 1010 #161
F +86 21 6270 3099 #161
c Liang Chen 陳良
e chenliang@toto.com.cn

Rep. Toto (East China)
延安西路 2201号
上海国际贸易中心210室
Shanghai, China
www.toto.com.cn

T +86 21 6270 1010 #161
F +86 21 6270 3099 #161
c Liang Chen 陳良
e chenliang@toto.com.cn

MUST BE OF CONTRACT QUALITY AND SUITABLE FOR COMMERCIAL
USE. FABRICATION TO BE IN ACCORDANCE WITH HBA PREAMBLES
(www.hbadesign.com/preambles.html) AND AS FOLLOWS:

1. Description描述: Bathtub Mixer Set II.
2. Location: Bathroom. Refer to Plans and Elevations for exact locations and quantities.
位置: 浴室. 確切安裝位置及數量請參閱平面及立面圖.
3. Refer to BHX-111 for details.
有关设计概念, 参阅BHX-111.
4. Model模型: DM205ECF.
5. Dimensions尺寸: As per manufacturer.
6. Finish材質: Polished Chrome.
7. Manufacturer to submit sample to HBA for approval prior to production.
制造前, 制造商必须呈交样板给于HBA批准。
8. Shipping: Must be sufficiently crated/packed/ taped to prevent any damage or breakages.
运输: 必须恰当的箱起/包扎/粘起以防任何的破裂。
9. Must be contract quality and suitable for commercial use.
必须是符合合约的水准并适合商业用途。
10. All item quantites are to be confirmed by operator on site prior to construction.
制造商必须於動工前确认所有数量的需求。
11. All custom designed materials must be coordinated and confirmed by HBA prior to fabrication
by contractor.
任何訂製材料務必在承包商製作前與HBA協調及最後設計確認。

Issued: 30-Nov-10

Project

Crowne Plaza He Fei

Area:

Guestroom Sanitary

Item:

Bathtub Mixer Set II

Project	5908
Qty.	58 Set
Item No.	BH-111

TOTO

独立式浴缸用
双柄混合龙头

型号
DM205ECF



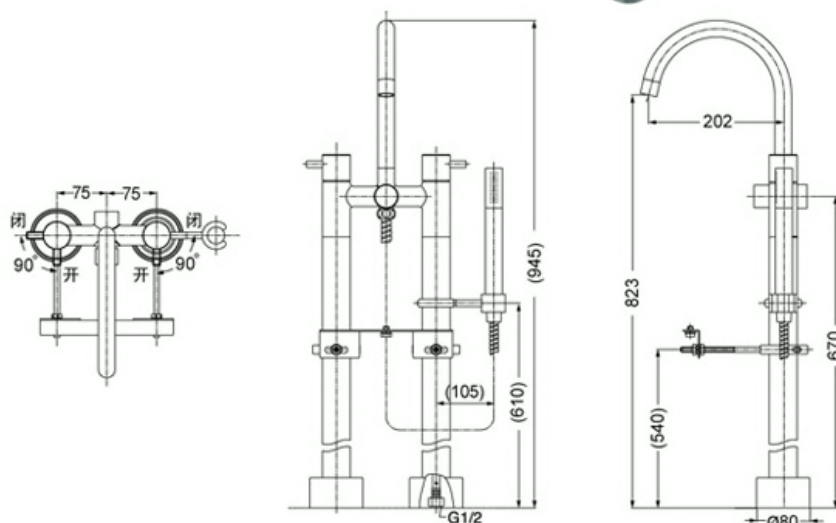
HBA

HIRSCH/BEDNER
ASSOCIATES
DESIGN CONSULTANTS

17/ 46 DOUGLAS ST.
MILTON 4064
QUEENSLAND
AUSTRALIA
FAX 62.3858.5699
TEL 617.3858.5688
www.HBAdesign.com

产品介绍

DM205ECF
独立式浴缸用双柄混合龙头



*TOTO公司保留对其产品规格和尺寸更改的权利，届时，恕不另行通知

() 建议安装尺寸

Issued: 30-Nov-10

Project

Crowne Plaza He Fei

Area:

Guestroom Sanitary

Item:

Bathtub Mixer Set II

Project	5908
Scale	NTS
By	PS
Item No.	BHX-111

SPECIFICATION



HBA

HIRSCH/BEDNER
ASSOCIATES
DESIGN CONSULTANTS

17/ 46 DOUGLAS ST.
MILTON 4064
QUEENSLAND
AUSTRALIA
FAX 62.3858.5699
TEL 617.3858.5688
www.HBAdesign.com

Mfg. Toto (East China)
延安西路 2201号
上海国际贸易中心210室
Shanghai, China
www.toto.com.cn

T +86 21 6270 1010 #161
F +86 21 6270 3099 #161
c Liang Chen 陳良
e chenliang@toto.com.cn

Rep. Toto (East China)
延安西路 2201号
上海国际贸易中心210室
Shanghai, China
www.toto.com.cn

T +86 21 6270 1010 #161
F +86 21 6270 3099 #161
c Liang Chen 陳良
e chenliang@toto.com.cn

MUST BE OF CONTRACT QUALITY AND SUITABLE FOR COMMERCIAL
USE. FABRICATION TO BE IN ACCORDANCE WITH HBA PREAMBLES
(www.hbadesign.com/preambles.html) AND AS FOLLOWS:

1. Description描述: Shower Set.
2. Location: Bathroom. Refer to Plans and Elevations for exact locations and quantities.
位置: 浴室. 確切安裝位置及數量請參閱平面及立面圖.
3. Refer to BHX-113 for details.
有关设计概念, 参阅BHX-113.
4. Model模型: DP321 & DV309R & DS741 & DB185CF.
5. Dimensions尺寸: As per manufacturer.
6. Finish材質: Polished Chrome.
7. Manufacturer to submit sample to HBA for approval prior to production.
制造前, 制造商必须呈交样板给于HBA批准。
8. Shipping: Must be sufficiently crated/packed/ taped to prevent any damage or breakages.
运输: 必须恰当的箱起/包扎/粘起以防任何的破裂。
9. Must be contract quality and suitable for commercial use.
必须是符合合约的水准并适合商业用途。
10. All item quantites are to be confirmed by operator on site prior to construction.
制造商必须於動工前确认所有数量的需求。
11. All custom designed materials must be coordinated and confirmed by HBA prior to fabrication
by contractor.
任何訂製材料務必在承包商製作前與HBA協調及最後設計確認。

Issued: 30-Nov-10

Project

Crowne Plaza He Fei

Area:

Guestroom Sanitary

Item:

Shower Set

Project

5908

Qty.

455 Sets

Item
No.

BH-113



HBA

HIRSCH/BEDNER
ASSOCIATES
DESIGN CONSULTANTS

17/ 46 DOUGLAS ST.
MILTON 4064
QUEENSLAND
AUSTRALIA
FAX 62.3858.5699
■ TEL 617.3858.5688 ■
www.HBAdesign.com

TOTO

淋浴龙头组合

型号

DP321+DV309R
+DS741+DB185CF (花洒头变更)

产品介绍:

- ① DP321+DV309R
单柄控制阀
- ② DS741
升降滑竿
- ③ DB185CF(花洒头变更)
手持花洒



Issued: 30-Nov-10

Project

Crowne Plaza He Fei

Area:

Guestroom Sanitary

Item:

Shower Set

Project	5908
Scale	NTS
By	PS
Item No.	BHX-113

SPECIFICATION



HBA

HIRSCH/BEDNER
ASSOCIATES
DESIGN CONSULTANTS

17/ 46 DOUGLAS ST.
MILTON 4064
QUEENSLAND
AUSTRALIA
FAX 62.3858.5699
TEL 617.3858.5688
www.HBAdesign.com

Mfg. Toto (East China)
延安西路 2201号
上海国际贸易中心210室
Shanghai, China
www.toto.com.cn

T +86 21 6270 1010 #161
F +86 21 6270 3099 #161
c Liang Chen 陳良
e chenliang@toto.com.cn

Rep. Toto (East China)
延安西路 2201号
上海国际贸易中心210室
Shanghai, China
www.toto.com.cn

T +86 21 6270 1010 #161
F +86 21 6270 3099 #161
c Liang Chen 陳良
e chenliang@toto.com.cn

MUST BE OF CONTRACT QUALITY AND SUITABLE FOR COMMERCIAL
USE. FABRICATION TO BE IN ACCORDANCE WITH HBA PREAMBLES
(www.hbadesign.com/preambles.html) AND AS FOLLOWS:

1. Description描述: Rain Shower.
2. Location: Bathroom. Refer to Plans and Elevations for exact locations and quantities.
位置: 浴室. 確切安裝位置及數量請參閱平面及立面圖.
3. Refer to BHX-114 for details.
有关设计概念, 参阅BHX-114.
4. Model模型: DP321 & DV309R & DS741 & DB185CF.
5. Dimensions尺寸: As per manufacturer.
6. Finish材質: Polished Chrome.
7. Manufacturer to submit sample to HBA for approval prior to production.
制造前, 制造商必须呈交样板给于HBA批准。
8. Shipping: Must be sufficiently crated/packed/ taped to prevent any damage or breakages.
运输: 必须恰当的箱起/包扎/粘起以防任何的破裂。
9. Must be contract quality and suitable for commercial use.
必须是符合合约的水准并适合商业用途。
10. All item quantites are to be confirmed by operator on site prior to construction.
制造商必须於動工前确认所有数量的需求。
11. All custom designed materials must be coordinated and confirmed by HBA prior to fabrication
by contractor.
任何訂製材料務必在承包商製作前與HBA協調及最後設計確認。

Issued: 30-Nov-10

Project

Crowne Plaza He Fei

Area:

Guestroom Sanitary

Item:

Rain Shower

Project

5908

Qty.

455 Each

Item
No.

BH-114



HBA

HIRSCH/BEDNER
ASSOCIATES
DESIGN CONSULTANTS

17/ 46 DOUGLAS ST.
MILTON 4064
QUEENSLAND
AUSTRALIA
FAX 62.3858.5699
TEL 617.3858.5688
www.HBAdesign.com

TOTO

淋浴花洒

型号

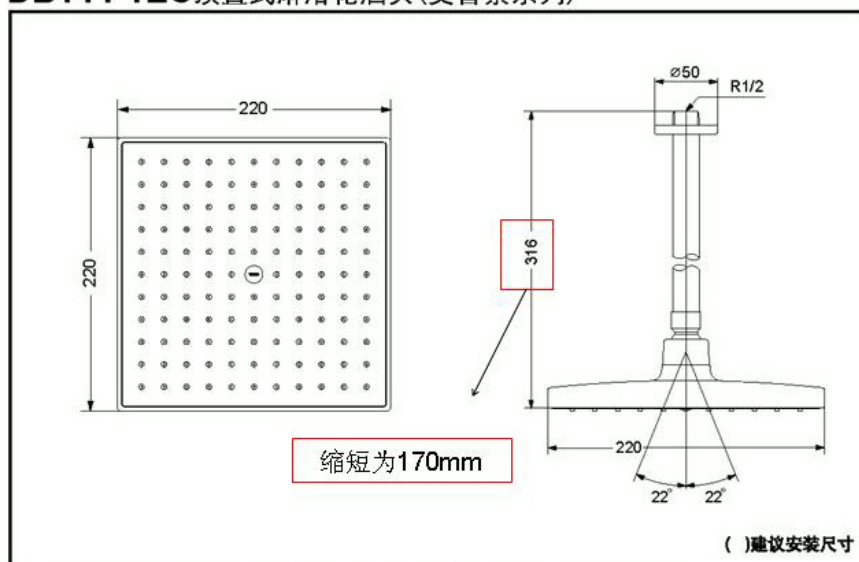
DB144-1EC (定制长度)

产品介绍:

DB144-1EC (定制长度)
埋入式花洒头



DB144-1EC顶置式淋浴花洒头(艾普索系列)



*TOTO公司保留对其产品规格和尺寸更改的权利。届时，恕不另行通知。

Issued: 30-Nov-10

Project

Crowne Plaza He Fei

Area:

Guestroom Sanitary

Item:

Rain Shower

Project	5908
Scale	NTS
By	PS
Item No.	BHX-114

SPECIFICATION



HBA

HIRSCH/BEDNER
ASSOCIATES
DESIGN CONSULTANTS

17/ 46 DOUGLAS ST.
MILTON 4064
QUEENSLAND
AUSTRALIA
FAX 62.3858.5699
TEL 617.3858.5688
www.HBAdesign.com

Mfg. Goldiden Industries Co., Ltd.
江華路采華苑 1 棟 3-4 樓
江門市, 廣東省 529000 China
www.goldiden.com

T +86 75 0316 8222 #68
F +86 75 0316 8737
c Johnny Chen 陈永強
e cyq--168@163.com

Rep. Goldiden Industries Co., Ltd.
江華路采華苑 1 棟 3-4 樓
江門市, 廣東省 529000 China
www.goldiden.com

T +86 75 0316 8222 #68
F +86 75 0316 8737
c Johnny Chen 陈永強
e cyq--168@163.com

MUST BE OF CONTRACT QUALITY AND SUITABLE FOR COMMERCIAL
USE. FABRICATION TO BE IN ACCORDANCE WITH HBA PREAMBLES
(www.hbadesign.com/preambles.html) AND AS FOLLOWS:

1. Description描述: Towel Rack.
2. Location: Bathroom. Refer to Plans and Elevations for exact locations and quantities.
位置: 浴室. 確切安裝位置及數量請參閱平面及立面圖.
3. Refer to BHX-116 for details.
有关设计概念, 参阅BHX-116.
4. Model模型: Yo JC561330P11.
5. Dimensions尺寸: 600mm W x 216mm D x 30mm H.
6. Finish材質: Polished Chrome.
7. Manufacturer to submit sample to HBA for approval prior to production.
制造前, 制造商必须呈交样板给于 H B A 批准.
8. Shipping: Must be sufficiently crated/packed/ taped to prevent any damage or breakages.
运输: 必须恰当的箱起/包扎/粘起以防任何的破裂.
9. Must be contract quality and suitable for commercial use.
必须是符合合约的水准并适合商业用途.
10. All item quantites are to be confirmed by operator on site prior to construction.
制造商必须於動工前确认所有数量的需求.
11. All custom designed materials must be coordinated and confirmed by HBA prior to fabrication
by contractor.
任何訂製材料務必在承包商製作前與 HBA 協調及最後設計確認.

Issued: 30-Nov-10

Project

Crowne Plaza He Fei

Area:

Guestroom Sanitary

Item:

Towel Rack

Project

5908

Qty.

455 Each

Item
No.

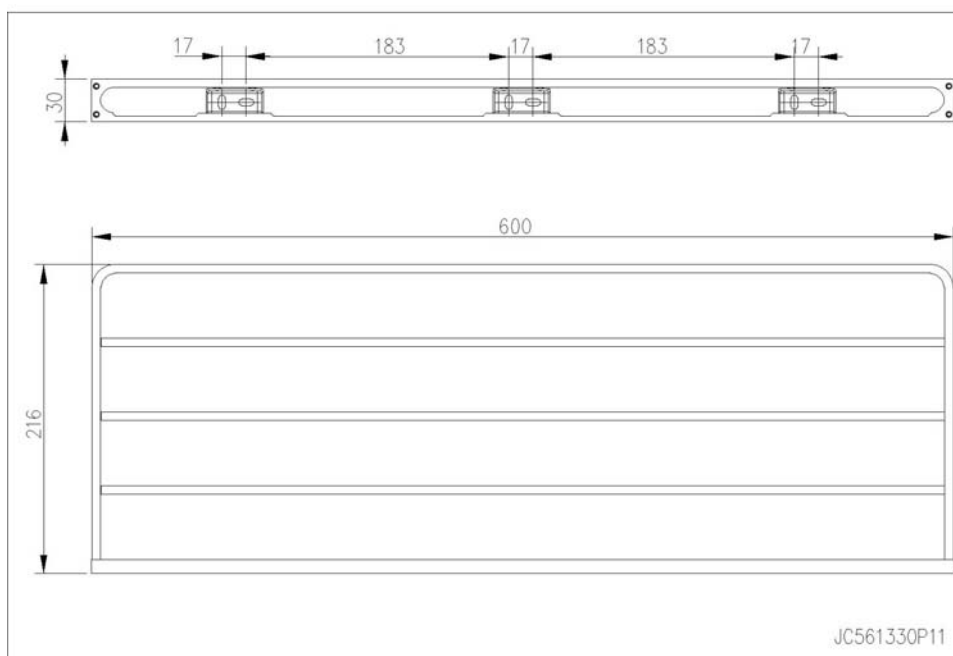
BH-116



HBA

HIRSCH/BEDNER
ASSOCIATES
DESIGN CONSULTANTS

17/ 46 DOUGLAS ST.
MILTON 4064
QUEENSLAND
AUSTRALIA
FAX 62.3858.5699
■ TEL 617.3858.5688 ■
www.HBAdesign.com



Project

Crowne Plaza He Fei

Area:

Guestroom Sanitary

Item:

Towel Rack

Issued: 30-Nov-10

Project	5908
Scale	NTS
By	PS
Item No.	BHX-116



HBA

HIRSCH/BEDNER
ASSOCIATES
DESIGN CONSULTANTS

17/ 46 DOUGLAS ST.
MILTON 4064
QUEENSLAND
AUSTRALIA
FAX 62.3858.5699
■ TEL 617.3858.5688 ■
www.HBAdesign.com



Issued: 30-Nov-10

Project

Crowne Plaza He Fei

Area:

Guestroom Sanitary

Item:

Towel Rack

Project	5908
Scale	NTS
By	PS
Item No.	BHX-116

SPECIFICATION



HBA

HIRSCH/BEDNER
ASSOCIATES
DESIGN CONSULTANTS

17/ 46 DOUGLAS ST.
MILTON 4064
QUEENSLAND
AUSTRALIA
FAX 62.3858.5699
TEL 617.3858.5688
www.HBAdesign.com

Mfg. To Be Manufactured Locally

Rep. Or Equal

MUST BE OF CONTRACT QUALITY AND SUITABLE FOR COMMERCIAL USE. FABRICATION TO BE IN ACCORDANCE WITH HBA PREAMBLES (www.hbadesign.com/preambles.html) AND AS FOLLOWS:

1. Description描述: Hand Towel Rail.
2. Location: Bathroom Vanity. Refer to Plans and Elevations for exact locations and quantities.
位置: 浴室洗面台. 確切安裝位置及數量請參閱平面及立面圖.
3. Refer to BHX-117 for details.
有关设计概念, 参阅BHX-117.
4. Model模型: Custom.
5. Dimensions尺寸: 200mm W x 30mm D x 20mm H. As per manufacturer.
6. Finish材質: Polished Chrome.
7. Manufacturer to submit sample to HBA for approval prior to production.
制造前, 制造商必须呈交样板给于HBA批准。
8. Shipping: Must be sufficiently crated/packed/ taped to prevent any damage or breakages.
运输: 必须恰当的箱起/包扎/粘起以防任何的破裂。
9. Must be contract quality and suitable for commercial use.
必须是符合合约的水准并适合商业用途。
10. All item quantites are to be confirmed by operator on site prior to construction.
制造商必须於動工前确认所有数量的需求。
11. All custom designed materials must be coordinated and confirmed by HBA prior to fabrication by contractor.
任何訂製材料務必在承包商製作前與HBA協調及最後設計確認。

Issued: 30-Nov-10

Project

Crowne Plaza He Fei

Area:

Guestroom Sanitary

Item:

Hand Towel Rail - S

Project	5908
Qty.	700 Each
Item No.	BH-117



HBA

HIRSCH/BEDNER
ASSOCIATES
DESIGN CONSULTANTS

17/ 46 DOUGLAS ST.
MILTON 4064
QUEENSLAND
AUSTRALIA
FAX 62.3858.5699
■ TEL 617.3858.5688 ■
www.HBAdesign.com



Issued: 30-Nov-10

Project

Crowne Plaza He Fei

Area:

Guestroom Sanitary

Item:

Hand Towel Rail - S

Project	5908
Scale	NTS
By	PS
Item No.	BHX-117

SPECIFICATION



HBA

HIRSCH/BEDNER
ASSOCIATES
DESIGN CONSULTANTS

17/ 46 DOUGLAS ST.
MILTON 4064
QUEENSLAND
AUSTRALIA
FAX 62.3858.5699
TEL 617.3858.5688
www.HBAdesign.com

Mfg. To Be Manufactured Locally

Rep. Or Equal

MUST BE OF CONTRACT QUALITY AND SUITABLE FOR COMMERCIAL USE. FABRICATION TO BE IN ACCORDANCE WITH HBA PREAMBLES (www.hbadesign.com/preambles.html) AND AS FOLLOWS:

1. Description描述: Hand Towel Rail.
2. Location: Bathroom Vanity. Refer to Plans and Elevations for exact locations and quantities.
位置: 浴室洗面台. 確切安裝位置及數量請參閱平面及立面圖.
3. Refer to BHX-118 for details.
有关设计概念, 参阅BHX-118.
4. Model模型: Custom.
5. Dimensions尺寸: 260mm W x 30mm D x 20mm H. As per manufacturer.
6. Finish材質: Polished Chrome.
7. Manufacturer to submit sample to HBA for approval prior to production.
制造前, 制造商必须呈交样板给于HBA批准。
8. Shipping: Must be sufficiently crated/packed/ taped to prevent any damage or breakages.
运输: 必须恰当的箱起/包扎/粘起以防任何的破裂。
9. Must be contract quality and suitable for commercial use.
必须是符合合约的水准并适合商业用途。
10. All item quantites are to be confirmed by operator on site prior to construction.
制造商必须於動工前确认所有数量的需求。
11. All custom designed materials must be coordinated and confirmed by HBA prior to fabrication by contractor.
任何訂製材料務必在承包商製作前與HBA協調及最後設計確認。

Issued: 30-Nov-10

Project

Crowne Plaza He Fei

Area:

Guestroom Sanitary

Item:

Hand Towel Rail - L

Project	5908
Qty.	210 Each
Item No.	BH-118



HBA

HIRSCH/BEDNER
ASSOCIATES
DESIGN CONSULTANTS

17/ 46 DOUGLAS ST.
MILTON 4064
QUEENSLAND
AUSTRALIA
FAX 62.3858.5699
■ TEL 617.3858.5688 ■
www.HBAdesign.com



Issued: 30-Nov-10

Project

Crowne Plaza He Fei

Area:

Guestroom Sanitary

Item:

Hand Towel Rail - L

Project	5908
Scale	NTS
By	PS
Item No.	BHX-118

SPECIFICATION



HBA

HIRSCH/BEDNER
ASSOCIATES
DESIGN CONSULTANTS

17/ 46 DOUGLAS ST.
MILTON 4064
QUEENSLAND
AUSTRALIA
FAX 62.3858.5699
TEL 617.3858.5688
www.HBAdesign.com

Mfg. Goldiden Industries Co., Ltd.
江華路采華苑 1 棟 3-4 樓
江門市, 廣東省 529000 China
www.goldiden.com

T +86 75 0316 8222 #68
F +86 75 0316 8737
c Johnny Chen 陈永強
e cyq--168@163.com

Rep. Goldiden Industries Co., Ltd.
江華路采華苑 1 棟 3-4 樓
江門市, 廣東省 529000 China
www.goldiden.com

T +86 75 0316 8222 #68
F +86 75 0316 8737
c Johnny Chen 陈永強
e cyq--168@163.com

MUST BE OF CONTRACT QUALITY AND SUITABLE FOR COMMERCIAL
USE. FABRICATION TO BE IN ACCORDANCE WITH HBA PREAMBLES
(www.hbadesign.com/preambles.html) AND AS FOLLOWS:

1. Description描述: Paper Roll Holder.
2. Location: Bathroom. Refer to Plans and Elevations for exact locations and quantities.
位置: 浴室. 確切安裝位置及數量請參閱平面及立面圖.
3. Refer to BHX-119 for details.
有关设计概念, 参阅BHX-119.
4. Model模型: Yo JC561260P11.
5. Dimensions尺寸: 145mm W x 86mm D x 30mm H. As per manufacturer.
6. Finish材質: Polished Chrome.
7. Manufacturer to submit sample to HBA for approval prior to production.
制造前, 制造商必须呈交样板给于HBA批准.
8. Shipping: Must be sufficiently crated/packed/ taped to prevent any damage or breakages.
运输: 必须恰当的箱起/包扎/粘起以防任何的破裂.
9. Must be contract quality and suitable for commercial use.
必须是符合合约的水准并适合商业用途.
10. All item quantites are to be confirmed by operator on site prior to construction.
制造商必须於動工前确认所有数量的需求.
11. All custom designed materials must be coordinated and confirmed by HBA prior to fabrication
by contractor.
任何訂製材料務必在承包商製作前與HBA協調及最後設計確認.

Issued: 30-Nov-10

Project

Crowne Plaza He Fei

Area:

Guestroom Sanitary

Item:

Paper Roll Holder

Project

5908

Qty.

455 Each

Item
No.

BH-119



HBA

HIRSCH/BEDNER
ASSOCIATES
DESIGN CONSULTANTS

17/ 46 DOUGLAS ST.
MILTON 4064
QUEENSLAND
AUSTRALIA
FAX 62.3858.5699
■ TEL 617.3858.5688 ■
www.HBAdesign.com



Issued: 30-Nov-10

Project

Crowne Plaza He Fei

Area:

Guestroom Sanitary

Item:

Paper Roll Holder

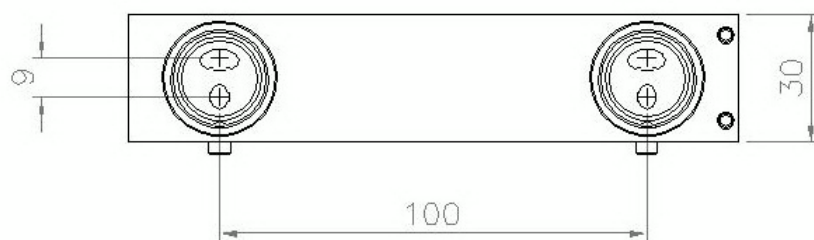
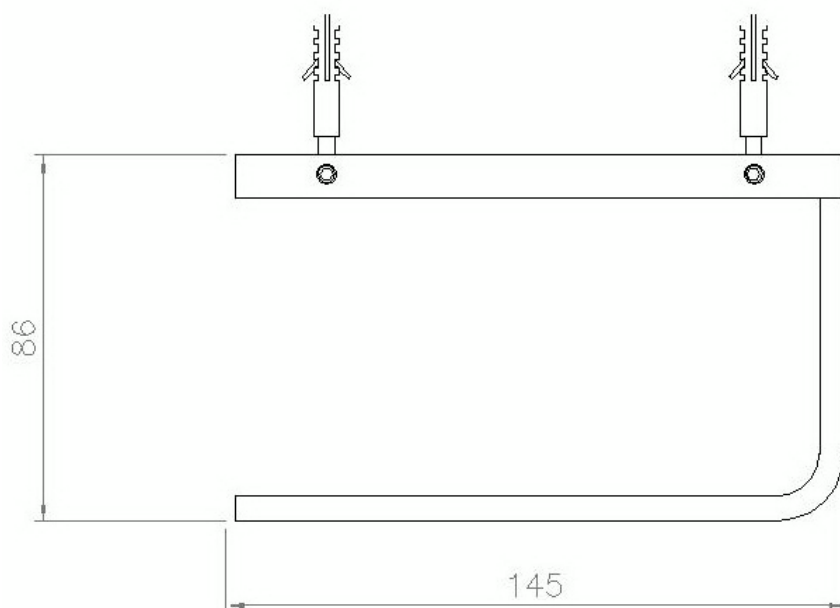
Project	5908
Scale	NTS
By	PS
Item No.	BHX-119



HBA

HIRSCH/BEDNER
ASSOCIATES
DESIGN CONSULTANTS

17/ 46 DOUGLAS ST.
MILTON 4064
QUEENSLAND
AUSTRALIA
FAX 62.3858.5699
■ TEL 617.3858.5688 ■
www.HBAdesign.com



JC561260P11

Issued: 30-Nov-10

Project

Crowne Plaza He Fei

Area:

Guestroom Sanitary

Item:

Paper Roll Holder

Project	5908
Scale	NTS
By	PS
Item No.	BHX-119

SPECIFICATION



HBA

HIRSCH/BEDNER
ASSOCIATES
DESIGN CONSULTANTS

17/ 46 DOUGLAS ST.
MILTON 4064
QUEENSLAND
AUSTRALIA
FAX 62.3858.5699
TEL 617.3858.5688
www.HBAdesign.com

Mfg. Goldiden Industries Co., Ltd.
江華路采華苑 1 棟 3-4 樓
江門市, 廣東省 529000 China
www.goldiden.com

T +86 75 0316 8222 #68
F +86 75 0316 8737
c Johnny Chen 陈永強
e cyq--168@163.com

Rep. Goldiden Industries Co., Ltd.
江華路采華苑 1 棟 3-4 樓
江門市, 廣東省 529000 China
www.goldiden.com

T +86 75 0316 8222 #68
F +86 75 0316 8737
c Johnny Chen 陈永強
e cyq--168@163.com

MUST BE OF CONTRACT QUALITY AND SUITABLE FOR COMMERCIAL
USE. FABRICATION TO BE IN ACCORDANCE WITH HBA PREAMBLES
(www.hbadesign.com/preambles.html) AND AS FOLLOWS:

1. Description描述: Spare Paper Roll Holder.
2. Location: Bathroom. Refer to Plans and Elevations for exact locations and quantities.
位置: 浴室. 確切安裝位置及數量請參閱平面及立面圖.
3. Refer to BHX-120 for details.
有关设计概念, 参阅BHX-120.
4. Model模型: Yo JC561261P11.
5. Dimensions尺寸: 142mm W x 106mm D x 30mm H. As per manufacturer.
6. Finish材質: Polished Chrome.
7. Manufacturer to submit sample to HBA for approval prior to production.
制造前, 制造商必须呈交样板给于HBA批准.
8. Shipping: Must be sufficiently crated/packed/ taped to prevent any damage or breakages.
运输: 必须恰当的箱起/包扎/粘起以防任何的破裂.
9. Must be contract quality and suitable for commercial use.
必须是符合合约的水准并适合商业用途.
10. All item quantites are to be confirmed by operator on site prior to construction.
制造商必须於動工前确认所有数量的需求.
11. All custom designed materials must be coordinated and confirmed by HBA prior to fabrication
by contractor.
任何訂製材料務必在承包商製作前與HBA協調及最後設計確認.

Issued: 30-Nov-10

Project

Crowne Plaza He Fei

Area:

Guestroom Sanitary

Item:

Spare Paper Roll Holder

Project

5908

Qty.

455 Each

Item
No.

BH-120



HBA

HIRSCH/BEDNER
ASSOCIATES
DESIGN CONSULTANTS

17/ 46 DOUGLAS ST.
MILTON 4064
QUEENSLAND
AUSTRALIA
FAX 62.3858.5699
■ TEL 617.3858.5688 ■
www.HBAdesign.com



Issued: 30-Nov-10

Project

Crowne Plaza He Fei

Area:

Guestroom Sanitary

Item:

Spare Paper Roll Holder

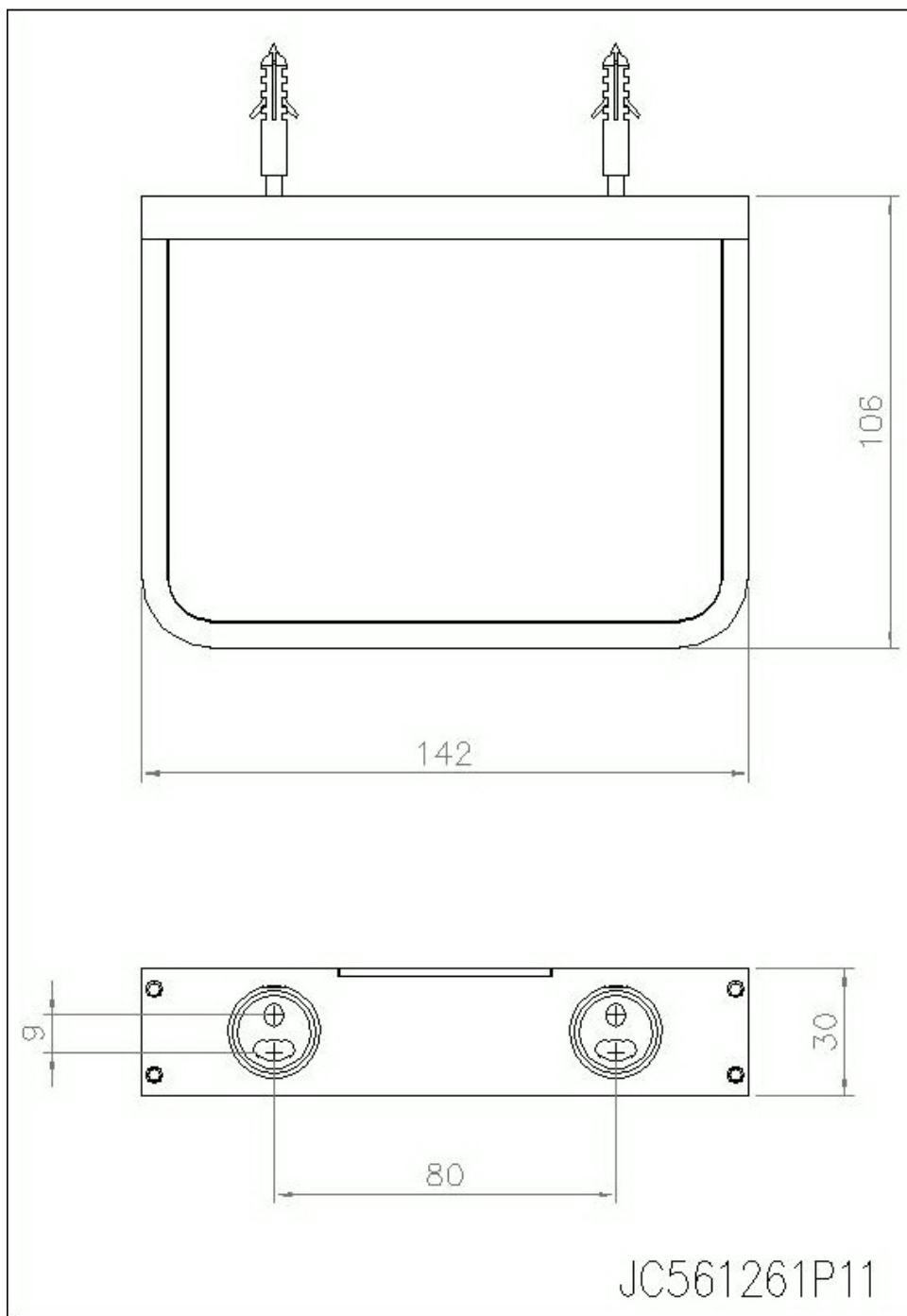
Project	5908
Scale	NTS
By	PS
Item No.	BHX-120



HBA

HIRSCH/BEDNER
ASSOCIATES
DESIGN CONSULTANTS

17/ 46 DOUGLAS ST.
MILTON 4064
QUEENSLAND
AUSTRALIA
FAX 62.3858.5699
■ TEL 617.3858.5688 ■
www.HBAdesign.com



Project

Crowne Plaza He Fei

Area:

Guestroom Sanitary

Item:

Spare Paper Roll Holder

Issued: 30-Nov-10

Project	5908
Scale	NTS
By	PS
Item No.	BHX-120

SPECIFICATION



HBA

HIRSCH/BEDNER
ASSOCIATES
DESIGN CONSULTANTS

17/ 46 DOUGLAS ST.
MILTON 4064
QUEENSLAND
AUSTRALIA
FAX 62.3858.5699
TEL 617.3858.5688
www.HBAdesign.com

Mfg. Goldiden Industries Co., Ltd.
江華路采華苑 1 棟 3-4 樓
江門市, 廣東省 529000 China
www.goldiden.com

T +86 75 0316 8222 #68
F +86 75 0316 8737
c Johnny Chen 陈永強
e cyq--168@163.com

Rep. Goldiden Industries Co., Ltd.
江華路采華苑 1 棟 3-4 樓
江門市, 廣東省 529000 China
www.goldiden.com

T +86 75 0316 8222 #68
F +86 75 0316 8737
c Johnny Chen 陈永強
e cyq--168@163.com

MUST BE OF CONTRACT QUALITY AND SUITABLE FOR COMMERCIAL
USE. FABRICATION TO BE IN ACCORDANCE WITH HBA PREAMBLES
(www.hbadesign.com/preambles.html) AND AS FOLLOWS:

1. Description描述: Robe Hook.
2. Location: Bathroom. Refer to Plans and Elevations for exact locations and quantities.
位置: 浴室. 確切安裝位置及數量請參閱平面及立面圖.
3. Refer to BHX-121 for details.
有关设计概念, 参阅BHX-121.
4. Model模型: Fen JC564210P11.
5. Dimensions尺寸: 60mm W x 45mm D x 14mm H. As per manufacturer.
6. Finish材質: Polished Chrome.
7. Manufacturer to submit sample to HBA for approval prior to production.
制造前, 制造商必须呈交样板给于 H B A 批准.
8. Shipping: Must be sufficiently crated/packed/ taped to prevent any damage or breakages.
运输: 必须恰当的箱起/包扎/粘起以防任何的破裂.
9. Must be contract quality and suitable for commercial use.
必须是符合合约的水准并适合商业用途.
10. All item quantites are to be confirmed by operator on site prior to construction.
制造商必须於動工前确认所有数量的需求.
11. All custom designed materials must be coordinated and confirmed by HBA prior to fabrication
by contractor.
任何訂製材料務必在承包商製作前與 HBA 協調及最後設計確認.

Issued: 30-Nov-10

Project

Crowne Plaza He Fei

Area:

Guestroom Sanitary

Item:

Robe Hook

Project

5908

Qty.

455 Each

Item
No.

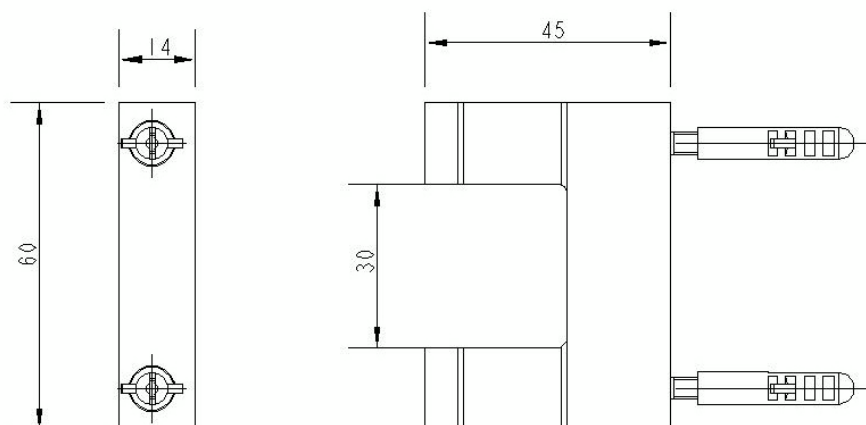
BH-121



HBA

HIRSCH/BEDNER
ASSOCIATES
DESIGN CONSULTANTS

17/ 46 DOUGLAS ST.
MILTON 4064
QUEENSLAND
AUSTRALIA
FAX 62.3858.5699
■ TEL 617.3858.5688 ■
www.HBAdesign.com



JCS64210P11

Project

Crowne Plaza He Fei

Area:

Guestroom Sanitary

Item:

Robe Hook

Issued: 30-Nov-10

Project	5908
Scale	NTS
By	PS
Item No.	BHX-121



HBA

HIRSCH/BEDNER
ASSOCIATES
DESIGN CONSULTANTS

17/ 46 DOUGLAS ST.
MILTON 4064
QUEENSLAND
AUSTRALIA
FAX 62.3858.5699
■ TEL 617.3858.5688 ■
www.HBAdesign.com



Issued: 30-Nov-10

Project

Crowne Plaza He Fei

Area:

Guestroom Sanitary

Item:

Robe Hook

Project	5908
Scale	NTS
By	PS
Item No.	BHX-121

SPECIFICATION



HBA

HIRSCH/BEDNER
ASSOCIATES
DESIGN CONSULTANTS

17/ 46 DOUGLAS ST.
MILTON 4064
QUEENSLAND
AUSTRALIA
FAX 62.3858.5699
TEL 617.3858.5688
www.HBAdesign.com

Mfg. GEESA Bathroom Accessories
P.O.Box 477
Vanadiumweg 2
3800 AL Amersfoort, Holland
Netherlands
www.geesa.nl

T +31 033 463 3214
F +31 033 463 7186
c Marc Goosen
e m.goosen@geesa.nl

Rep. Massford Ltd. (Hong Kong)
17/F First Commercial Building
33 Leighton Road
Causeway Bay
Hong Kong, China

T +852 2891 6860
F +852 2834 3029
c Anita Fung
e anitafung@massford.com

MUST BE OF CONTRACT QUALITY AND SUITABLE FOR COMMERCIAL
USE. FABRICATION TO BE IN ACCORDANCE WITH HBA PREAMBLES
(www.hbadesign.com/preambles.html) AND AS FOLLOWS:

1. Description描述: Grooming Mirror.
2. Location: Bathroom. Refer to Plans and Elevations for exact locations and quantities.
位置: 浴室. 確切安裝位置及數量請參閱平面及立面圖.
3. Refer to BHX-122 for details.
有关设计概念, 参阅BHX-122.
4. Model模型: 1093.
5. Dimensions尺寸: 215mm DIA x 290mm D x 120mm H. As per manufacturer.
6. Finish材質: Polished Chrome.
7. Manufacturer to submit sample to HBA for approval prior to production.
制造前, 制造商必须呈交样板给于 H B A 批准。
8. Shipping: Must be sufficiently crated/packed/ taped to prevent any damage or breakages.
运输: 必须恰当的箱起/包扎/粘起以防任何的破裂。
9. Must be contract quality and suitable for commercial use.
必须是符合合约的水准并适合商业用途。
10. All item quantites are to be confirmed by operator on site prior to construction.
制造商必须於動工前确认所有数量的需求。
11. All custom designed materials must be coordinated and confirmed by HBA prior to fabrication
by contractor.
任何訂製材料務必在承包商製作前與 HBA 協調及最後設計確認。

Issued: 30-Nov-10

Project

Crowne Plaza He Fei

Area:

Guestroom Sanitary

Item:

Grooming Mirror

Project

5908

Qty.

455 Each

Item
No.

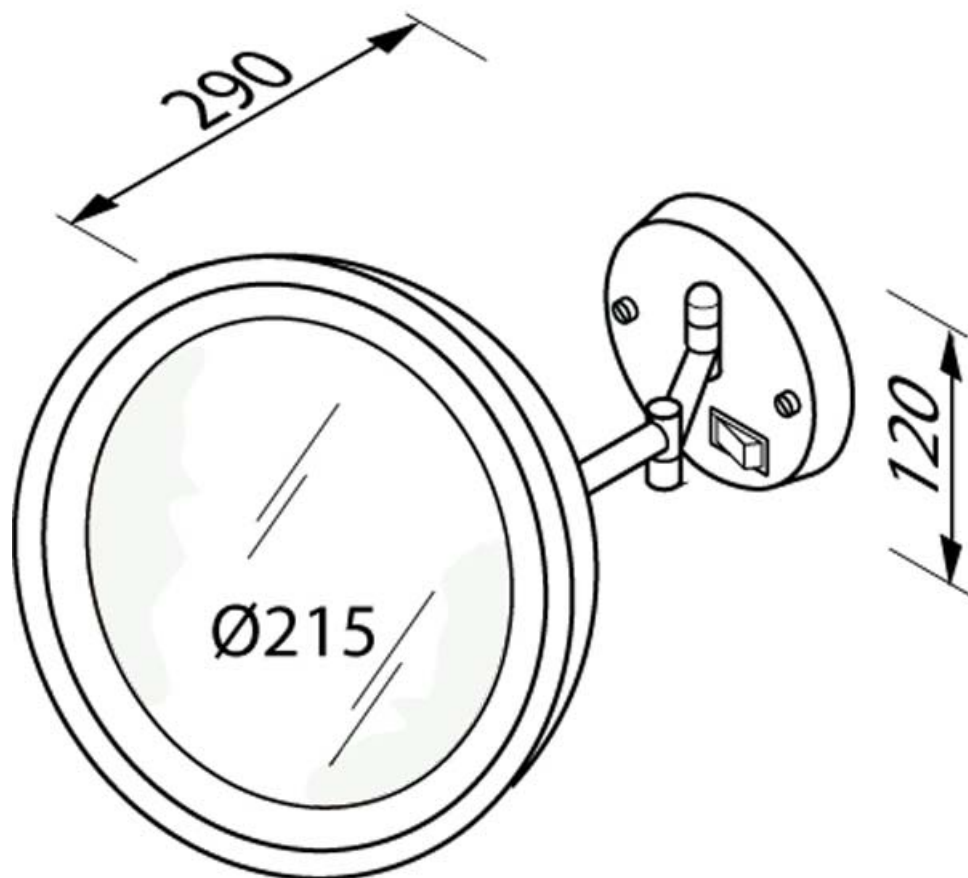
BH-122



HBA

HIRSCH/BEDNER
ASSOCIATES
DESIGN CONSULTANTS

17/ 46 DOUGLAS ST.
MILTON 4064
QUEENSLAND
AUSTRALIA
FAX 62.3858.5699
■ TEL 617.3858.5688 ■
www.HBAdesign.com



Project

Crowne Plaza He Fei

Area:

Guestroom Sanitary

Item:

Grooming Mirror

Issued: 30-Nov-10

Project	5908
Scale	NTS
By	PS
Item No.	BHX-122



HBA

HIRSCH/BEDNER
ASSOCIATES
DESIGN CONSULTANTS

17/ 46 DOUGLAS ST.
MILTON 4064
QUEENSLAND
AUSTRALIA
FAX 62.3858.5699
■ TEL 617.3858.5688 ■
www.HBAdesign.com



Issued: 30-Nov-10

Project

Crowne Plaza He Fei

Area:

Guestroom Sanitary

Item:

Grooming Mirror

Project	5908
Scale	NTS
By	PS
Item No.	BHX-122

SPECIFICATION



HBA

HIRSCH/BEDNER
ASSOCIATES
DESIGN CONSULTANTS

17/ 46 DOUGLAS ST.
MILTON 4064
QUEENSLAND
AUSTRALIA
FAX 62.3858.5699
TEL 617.3858.5688
www.HBAdesign.com

Mfg. Goldiden Industries Co., Ltd.
江華路采華苑 1 棟 3-4 樓
江門市, 廣東省 529000 China
www.goldiden.com

T +86 75 0316 8222 #68
F +86 75 0316 8737
c Johnny Chen 陈永強
e cyq--168@163.com

Rep. Goldiden Industries Co., Ltd.
江華路采華苑 1 棟 3-4 樓
江門市, 廣東省 529000 China
www.goldiden.com

T +86 75 0316 8222 #68
F +86 75 0316 8737
c Johnny Chen 陈永強
e cyq--168@163.com

MUST BE OF CONTRACT QUALITY AND SUITABLE FOR COMMERCIAL
USE. FABRICATION TO BE IN ACCORDANCE WITH HBA PREAMBLES
(www.hbadesign.com/preambles.html) AND AS FOLLOWS:

1. Description描述: Clothesline.
2. Location: Bathroom. Refer to Plans and Elevations for exact locations and quantities.
位置: 浴室. 確切安裝位置及數量請參閱平面及立面圖.
3. Refer to BHX-123 for details.
有关设计概念, 参阅BHX-123.
4. Model模型: SCH0012SS.
5. Dimensions尺寸: As per manufacturer.
6. Finish材質: Polished Chrome.
7. Manufacturer to submit sample to HBA for approval prior to production.
制造前, 制造商必须呈交样板给于 H B A 批准.
8. Shipping: Must be sufficiently crated/packed/ taped to prevent any damage or breakages.
运输: 必须恰当的箱起/包扎/粘起以防任何的破裂.
9. Must be contract quality and suitable for commercial use.
必须是符合合约的水准并适合商业用途.
10. All item quantites are to be confirmed by operator on site prior to construction.
制造商必须於動工前确认所有数量的需求.
11. All custom designed materials must be coordinated and confirmed by HBA prior to fabrication
by contractor.
任何訂製材料務必在承包商製作前與 HBA 協調及最後設計確認.

Issued: 30-Nov-10

Project

Crowne Plaza He Fei

Area:

Guestroom Sanitary

Item:

Clothesline

Project

5908

Qty.

455 Each

Item
No.

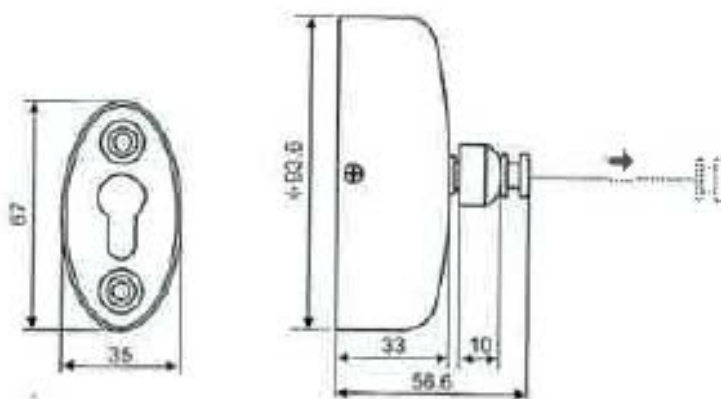
BH-123



HBA

HIRSCH/BEDNER
ASSOCIATES
DESIGN CONSULTANTS

17/ 46 DOUGLAS ST.
MILTON 4064
QUEENSLAND
AUSTRALIA
FAX 62.3858.5699
■ TEL 617.3858.5688 ■
www.HBAdesign.com



SCH0012SS

Stainless steel coat hanger

Issued: 30-Nov-10

Project

Crowne Plaza He Fei

Area:

Guestroom Sanitary

Item:

Clothesline

Project	5908
Scale	NTS
By	PS
Item No.	BHX-123

SPECIFICATION



HBA

HIRSCH/BEDNER
ASSOCIATES
DESIGN CONSULTANTS

17/ 46 DOUGLAS ST.
MILTON 4064
QUEENSLAND
AUSTRALIA
FAX 62.3858.5699
TEL 617.3858.5688
www.HBAdesign.com

Mfg. Toto (East China)
延安西路 2201号
上海国际贸易中心210室
Shanghai, China
www.toto.com.cn

T +86 21 6270 1010 #161
F +86 21 6270 3099 #161
c Liang Chen 陳良
e chenliang@toto.com.cn

Rep. Toto (East China)
延安西路 2201号
上海国际贸易中心210室
Shanghai, China
www.toto.com.cn

T +86 21 6270 1010 #161
F +86 21 6270 3099 #161
c Liang Chen 陳良
e chenliang@toto.com.cn

MUST BE OF CONTRACT QUALITY AND SUITABLE FOR COMMERCIAL USE. FABRICATION TO BE IN ACCORDANCE WITH HBA PREAMBLES (www.hbadesign.com/preambles.html) AND AS FOLLOWS:

1. Description描述: L-Shaped Grab Bar.
2. Location: Bathroom. Refer to Plans and Elevations for exact locations and quantities.
位置: 浴室. 確切安裝位置及數量請參閱平面及立面圖.
3. Refer to BHX-124 for details.
有关设计概念, 参阅BHX-124.
4. Model模型: Disable Hand Rail 304.
5. Dimensions尺寸: As per manufacturer.
6. Finish材質: Polished Stainless Steel.
7. Manufacturer to submit sample to HBA for approval prior to production.
制造前, 制造商必须呈交样板给于HBA批准。
8. Shipping: Must be sufficiently crated/packed/ taped to prevent any damage or breakages.
运输: 必须恰当的箱起/包扎/粘起以防任何的破裂。
9. Must be contract quality and suitable for commercial use.
必须是符合合约的水准并适合商业用途。
10. All item quantites are to be confirmed by operator on site prior to construction.
制造商必须於動工前确认所有数量的需求。
11. All custom designed materials must be coordinated and confirmed by HBA prior to fabrication by contractor.
任何訂製材料務必在承包商製作前與HBA協調及最後設計確認。

Issued: 30-Nov-10

Project

Crowne Plaza He Fei

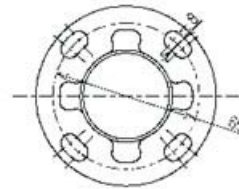
Area:

Guestroom Sanitary

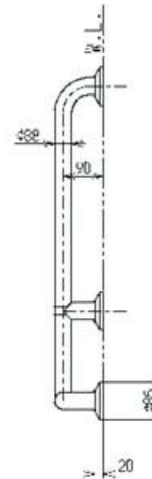
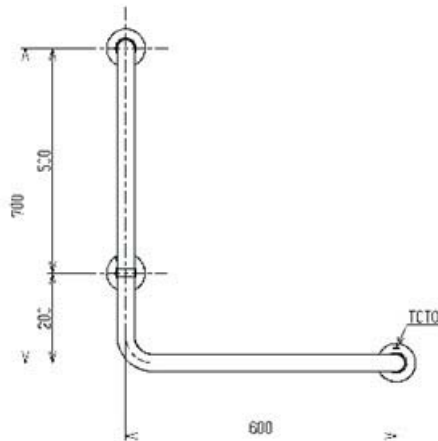
Item:

L-Shaped Grab Bar

Project	5908
Qty.	3 Sets
Item No.	BH-124



取付座詳細(1:2)



HBA

HIRSCH/BEDNER
ASSOCIATES
DESIGN CONSULTANTS

17/ 46 DOUGLAS ST.
MILTON 4064
QUEENSLAND
AUSTRALIA
FAX 62.3858.5699
■ TEL 617.3858.5688 ■
www.HBAdesign.com

Issued: 30-Nov-10

Project

Crowne Plaza He Fei

Area:

Guestroom Sanitary

Item:

L-Shaped Grab Bar

Project	5908
Scale	NTS
By	PS
Item No.	BHX-124

SPECIFICATION



HBA

HIRSCH/BEDNER
ASSOCIATES
DESIGN CONSULTANTS

17/ 46 DOUGLAS ST.
MILTON 4064
QUEENSLAND
AUSTRALIA
FAX 62.3858.5699
TEL 617.3858.5688
www.HBAdesign.com

Mfg. Toto (East China)
延安西路 2201号
上海国际贸易中心210室
Shanghai, China
www.toto.com.cn

T +86 21 6270 1010 #161
F +86 21 6270 3099 #161
c Liang Chen 陳良
e chenliang@toto.com.cn

Rep. Toto (East China)
延安西路 2201号
上海国际贸易中心210室
Shanghai, China
www.toto.com.cn

T +86 21 6270 1010 #161
F +86 21 6270 3099 #161
c Liang Chen 陳良
e chenliang@toto.com.cn

MUST BE OF CONTRACT QUALITY AND SUITABLE FOR COMMERCIAL
USE. FABRICATION TO BE IN ACCORDANCE WITH HBA PREAMBLES
(www.hbadesign.com/preambles.html) AND AS FOLLOWS:

1. Description描述: I-Shaped Grab Bar.
2. Location: Bathroom. Refer to Plans and Elevations for exact locations and quantities.
位置: 浴室. 確切安裝位置及數量請參閱平面及立面圖.
3. Refer to BHX-125 for details.
有关设计概念, 参阅BHX-125.
4. Model模型: Disable Hand Rail T110BM4.
5. Dimensions尺寸: As per manufacturer.
6. Finish材質: Polished Stainless Steel.
7. Manufacturer to submit sample to HBA for approval prior to production.
制造前, 制造商必须呈交样板给于HBA批准。
8. Shipping: Must be sufficiently crated/packed/ taped to prevent any damage or breakages.
运输: 必须恰当的箱起/包扎/粘起以防任何的破裂。
9. Must be contract quality and suitable for commercial use.
必须是符合合约的水准并适合商业用途。
10. All item quantites are to be confirmed by operator on site prior to construction.
制造商必须於動工前确认所有数量的需求。
11. All custom designed materials must be coordinated and confirmed by HBA prior to fabrication
by contractor.
任何訂製材料務必在承包商製作前與HBA協調及最後設計確認。

Issued: 30-Nov-10

Project

Crowne Plaza He Fei

Area:

Guestroom Sanitary

Item:

I-Shaped Grab Bar

Project	5908
Qty.	6 Sets
Item No.	BH-125



HBA

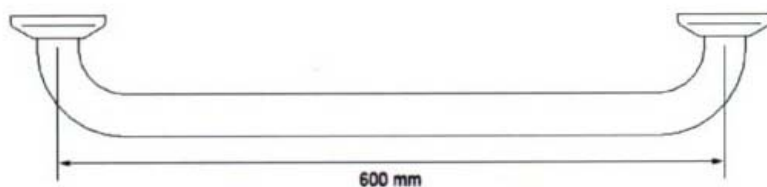
HIRSCH/BEDNER
ASSOCIATES
DESIGN CONSULTANTS

17/ 46 DOUGLAS ST.
MILTON 4064
QUEENSLAND
AUSTRALIA
FAX 62.3858.5699
■ TEL 617.3858.5688 ■
www.HBAdesign.com

Type No. : Local Grab Bar
Description : Stainless Steel: (Ø: 32 mm)
- Grab Bar
(600 mm)



Technical Specification :



Issued: 30-Nov-10

Project

Crowne Plaza He Fei

Area:

Guestroom Sanitary

Item:

I-Shaped Grab Bar

Project	5908
Scale	NTS
By	PS
Item No.	BHX-125

SPECIFICATION



HBA

HIRSCH/BEDNER
ASSOCIATES
DESIGN CONSULTANTS

17/ 46 DOUGLAS ST.
MILTON 4064
QUEENSLAND
AUSTRALIA
FAX 62.3858.5699
TEL 617.3858.5688
www.HBAdesign.com

Mfg. Lemas 乐美仕 T +86 139 1752 4806
China c 周先生
<http://shop34066432.taobao.com>

Rep. Lemas 乐美仕 T +86 139 1752 4806
China c 周先生
<http://shop34066432.taobao.com>

MUST BE OF CONTRACT QUALITY AND SUITABLE FOR COMMERCIAL
USE. FABRICATION TO BE IN ACCORDANCE WITH HBA PREAMBLES
(www.hbadesign.com/preambles.html) AND AS FOLLOWS:

1. Description描述: Shower Seat - Handicap.
2. Location: Bathroom. Refer to Plans and Elevations for exact locations and quantities.
位置: 浴室. 確切安裝位置及數量請參閱平面及立面圖.
3. Refer to BHX-126 for details.
有关设计概念, 参阅BHX-126.
4. Model模型: Model A.
5. Dimensions尺寸: 320mm W x 330mm D. As per manufacturer.
6. Finish材質: White.
7. Manufacturer to submit sample to HBA for approval prior to production.
制造前, 制造商必须呈交样板给于HBA批准。
8. Shipping: Must be sufficiently crated/packed/ taped to prevent any damage or breakages.
运输: 必须恰当的箱起/包扎/粘起以防任何的破裂。
9. Must be contract quality and suitable for commercial use.
必须是符合合约的水准并适合商业用途。
10. All item quantites are to be confirmed by operator on site prior to construction.
制造商必须於動工前确认所有数量的需求。
11. All custom designed materials must be coordinated and confirmed by HBA prior to fabrication by contractor.
任何訂製材料務必在承包商製作前與HBA協調及最後設計確認。

Issued: 30-Nov-10

Project

Crowne Plaza He Fei

Area:

Guestroom Sanitary

Item:

Shower Seat - Handicap

Project	5908
Qty.	3 Each
Item No.	BH-126



HBA

HIRSCH/BEDNER
ASSOCIATES
DESIGN CONSULTANTS

17/ 46 DOUGLAS ST.
MILTON 4064
QUEENSLAND
AUSTRALIA
FAX 62.3858.5699
■ TEL 617.3858.5688 ■
www.HBAdesign.com



Issued: 30-Nov-10

Project

Crowne Plaza He Fei

Area:

Guestroom Sanitary

Item:

Shower Seat - Handicap

Project	5908
Scale	NTS
By	PS
Item No.	BHX-126



HBA

HIRSCH/BEDNER
ASSOCIATES
DESIGN CONSULTANTS

17/ 46 DOUGLAS ST.
MILTON 4064
QUEENSLAND
AUSTRALIA
FAX 62.3858.5699
■ TEL 617.3858.5688 ■
www.HBAdesign.com

Issued: 30-Nov-10

Project

Crowne Plaza He Fei

Area:

Guestroom Sanitary

Item:

Shower Seat - Handicap

Project	5908
Scale	NTS
By	PS
Item No.	BHX-126

SPECIFICATION

Mfg. To Be Manufactured Locally

Rep. Or Equal



HBA

HIRSCH/BEDNER
ASSOCIATES
DESIGN CONSULTANTS

17/ 46 DOUGLAS ST.
MILTON 4064
QUEENSLAND
AUSTRALIA
FAX 62.3858.5699
TEL 617.3858.5688
www.HBAdesign.com

MUST BE OF CONTRACT QUALITY AND SUITABLE FOR COMMERCIAL USE. FABRICATION TO BE IN ACCORDANCE WITH HBA PREAMBLES (www.hbadesign.com/preambles.html) AND AS FOLLOWS:

1. Description描述: Shower Curtain - Handicap.
2. Location: Bathroom. Refer to Plans and Elevations for exact locations and quantities.
位置: 浴室. 確切安裝位置及數量請參閱平面及立面圖.
3. Refer to BHX-127 for details.
有关设计概念, 参阅BHX-127.
4. Model模型: Custom.
5. Dimensions尺寸: Approx. 1700mm W. Dimension to be measured and confirmed on site by contractor prior manufacturer.
6. Finish材質: Polished stainless steel. Upholstery specification as submitted by HBA.
7. Manufacturer to submit sample to HBA for approval prior to production.
制造前, 制造商必须呈交样板给于HBA批准。
8. Shipping: Must be sufficiently crated/packed/ taped to prevent any damage or breakages.
运输: 必须恰当的箱起/包扎/粘起以防任何的破裂。
9. Must be contract quality and suitable for commercial use.
必须是符合合约的水准并适合商业用途。
10. All item quantites are to be confirmed by operator on site prior to construction.
制造商必须於動工前确认所有数量的需求。
11. All custom designed materials must be coordinated and confirmed by HBA prior to fabrication by contractor.
任何訂製材料務必在承包商製作前與HBA協調及最後設計確認。

Issued: 30-Nov-10

Project

Crowne Plaza He Fei

Area:

Guestroom Sanitary

Item:

Shower Curtain - Handicap

Project	5908
Qty.	3 Each
Item No.	BH-127



HBA

HIRSCH/BEDNER
ASSOCIATES
DESIGN CONSULTANTS

17/ 46 DOUGLAS ST.
MILTON 4064
QUEENSLAND
AUSTRALIA
FAX 62.3858.5699
■ TEL 617.3858.5688 ■
www.HBAdesign.com



Issued: 30-Nov-10

Project

Crowne Plaza He Fei

Area:

Guestroom Sanitary

Item:

Shower Curtain - Handica

Project	5908
Scale	NTS
By	PS
Item No.	BHX-127

SPECIFICATION



HBA

HIRSCH/BEDNER
ASSOCIATES
DESIGN CONSULTANTS

17/ 46 DOUGLAS ST.
MILTON 4064
QUEENSLAND
AUSTRALIA
FAX 62.3858.5699
TEL 617.3858.5688
www.HBAdesign.com

Mfg.	Valley Forge Fabrics Inc. (Hong Kong) 2101, The Centre Mark 287-299 Queen's Road Central Hong Kong, China www.valleyforge.com	T	+852 2851 6832
		F	+852 2851 6132
		c	Sara Cheung
		e	saracheung@pacific.net.hk
Rep.	Valley Forge Fabrics Inc. (Hong Kong) 2101, The Centre Mark 287-299 Queen's Road Central Hong Kong, China www.valleyforge.com	T	+852 2851 6832
		F	+852 2851 6132
		c	Sara Cheung
		e	saracheung@pacific.net.hk

MUST BE OF CONTRACT QUALITY AND SUITABLE FOR COMMERCIAL USE. FABRICATION TO BE IN ACCORDANCE WITH HBA PREAMBLES (www.hbadesign.com/preambles.html) AND AS FOLLOWS:

1. Description描述: Fabric @ Shower Curtain.
2. Pattern图案: 410-16278.
3. Colour颜色: White.
4. Width宽: 23cm.
5. Repeat重复: N/A.
6. Content内容: 100% Polyester.
7. Ground Cloth底层布料: N/A.
8. Finish: Fabric must be treated for soil and stain repellency.
完饰面: 必须含有防沾污的抵抗力。
9. Backing: Fabric backing as required by fabricator and as recommended by fabric supplier.
背衬: 布料背衬如纺织家所需及如布料供应商所建议。
10. Quantity: Must be verified by fabricator.
数量: 装设者所确认数量。
11. Fire hazard classification: Must meet all applicable codes. If there are no code requirements for fabric application, fabric must meet ASTM E-84 class "A".
火灾危险性分级: 要符合所有的条例。如果没有任何的所定条例, 纺织品要符合ASTM E-84 class "A".
12. All Fabrics to be dimensionally stable. Fabric must be first run goods from full bolts. Printing, dyeing, and finishing methods should be appropriate for use of fabric. Fabric should be pre-shrunk, non-fading, and non-crocking.
所有纺织品必须不易变大或缩小。纺织品要是首轮货, 也不能有瑕疵。印刷, 染液, 和完成程序都要适合纺织品的用途。纺织品要经过萎缩, 也要有防损和退色的功能。
13. Fabric must be mildew resistant, appropriate for tropical climates and high humidity.
布料必须含防霉, 恰当使用于热带及高湿度区域的功能。
14. Provide dye lot sample for review by HBA prior to cutting and shipping fabric.
在运输和割料之前, 要提供HBA染料样品做检查。
15. This fabric to be used for drapery. Manufacturer to advise designer if there are any problems

Issued: 30-Nov-10

Project

Crowne Plaza He Fei

Area:

Guestroom Sanitary

Item:

Fabric @ Shower Curtain

Project	5908
Qty.	Meter
Item No.	BH-127.1

with specifying this product for the intended use.

注：此布料将用于 窗帘。若产品出现任何问题制造商将向设计师建议及说明产品的使用法。



HBA

HIRSCH/BEDNER
ASSOCIATES
DESIGN CONSULTANTS

17/ 46 DOUGLAS ST.
MILTON 4064
QUEENSLAND
AUSTRALIA
FAX 62.3858.5699
■ TEL 617.3858.5688 ■
www.HBAdesign.com

Issued: 30-Nov-10

Project

Crowne Plaza He Fei

Area:

Guestroom Sanitary

Item:

Fabric @ Shower Curtain

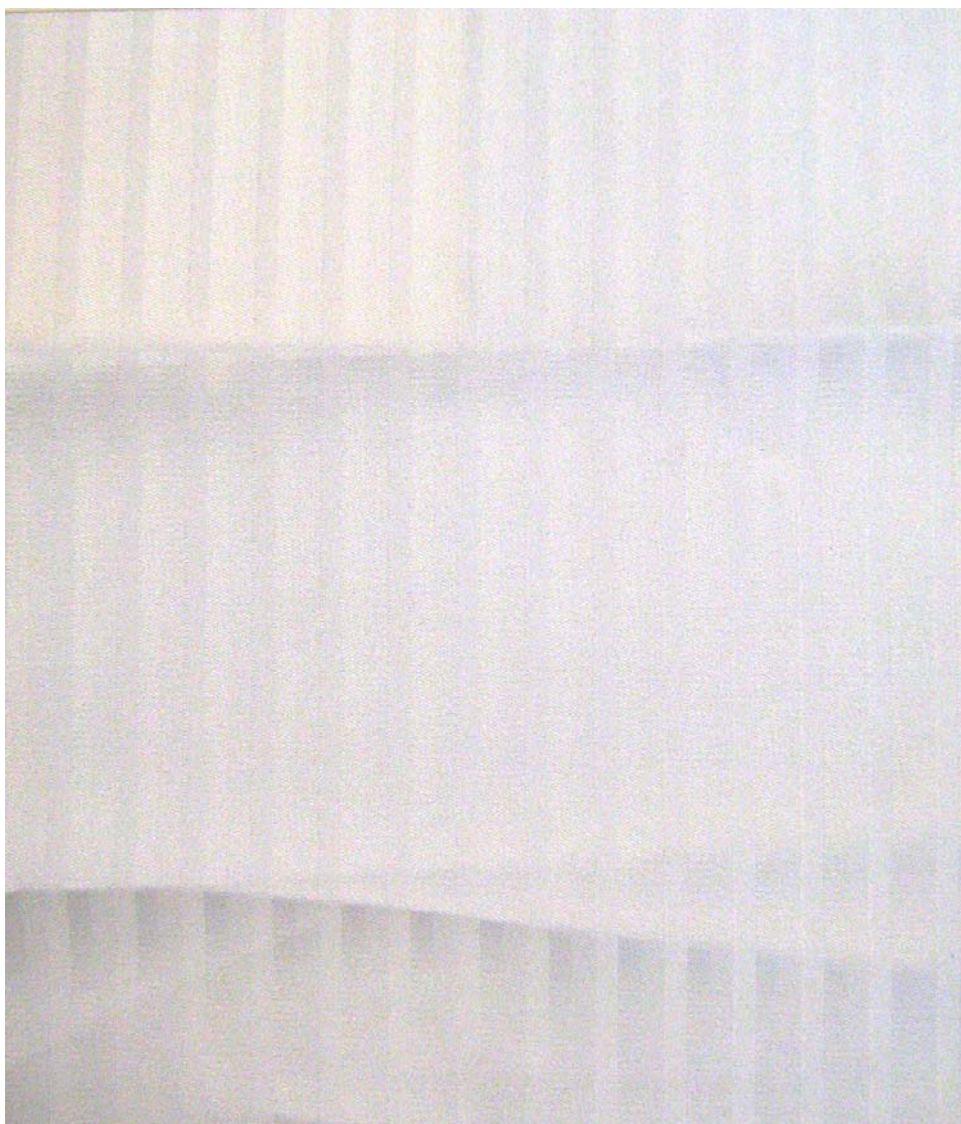
Project	5908
Qty.	Meter
Item No.	BH-127.1



HBA

HIRSCH/BEDNER
ASSOCIATES
DESIGN CONSULTANTS

17/ 46 DOUGLAS ST.
MILTON 4064
QUEENSLAND
AUSTRALIA
FAX 62.3858.5699
■ TEL 617.3858.5688 ■
www.HBAdesign.com



Project

Crowne Plaza He Fei

Area:

Guestroom Sanitary

Item:

Fabric @ Shower Curtain

Issued: 30-Nov-10

Project	5908
Scale	NTS
By	PS
Item No.	BHX-127.1

SPECIFICATION



HBA

HIRSCH/BEDNER
ASSOCIATES
DESIGN CONSULTANTS

17/ 46 DOUGLAS ST.
MILTON 4064
QUEENSLAND
AUSTRALIA
FAX 62.3858.5699
TEL 617.3858.5688
www.HBAdesign.com

Mfg.	Shanghai Bagen Electronic & Technology 2F/D Building No. 3601 DongFang Road Shanghai, 200125 China www.beign.com	T	+86 21 5090 7817
		F	+86 21 5090 7817
		e	beigen@126.com
Rep.	Shanghai Bagen Electronic & Technology 2F/D Building No. 3601 DongFang Road Shanghai, 200125 China www.beign.com	T	+86 21 5090 7817
		F	+86 21 5090 7817
		e	beigen@126.com

MUST BE OF CONTRACT QUALITY AND SUITABLE FOR COMMERCIAL USE. FABRICATION TO BE IN ACCORDANCE WITH HBA PREAMBLES (www.hbadesign.com/preambles.html) AND AS FOLLOWS:

1. Description描述: Rectangular Mirror Defogger.
2. Location: Bathroom Mirror. Refer to Plans and Elevations for exact locations and quantities.
位置: 浴室鏡子. 確切安裝位置及數量請參閱平面及立面圖.
3. Refer to BHX-129 for details.
有关设计概念, 参阅BHX-129.
4. Model模型: R-3040.
5. Dimensions尺寸: 750mm W x 1000mm L.
6. Finish材質: As per manufacturer.
7. Manufacturer to submit sample to HBA for approval prior to production.
制造前, 制造商必须呈交样板给于HBA批准。
8. Shipping: Must be sufficiently crated/packed/ taped to prevent any damage or breakages.
运输: 必须恰当的箱起/包扎/粘起以防任何的破裂。
9. Must be contract quality and suitable for commercial use.
必须是符合合约的水准并适合商业用途。
10. All item quantites are to be confirmed by operator on site prior to construction.
制造商必须於動工前确认所有数量的需求。
11. All custom designed materials must be coordinated and confirmed by HBA prior to fabrication by contractor.
任何訂製材料務必在承包商製作前與HBA協調及最後設計確認。

Issued: 30-Nov-10

Project

Crowne Plaza He Fei

Area:

Guestroom Sanitary

Item:

Mirror Defogger

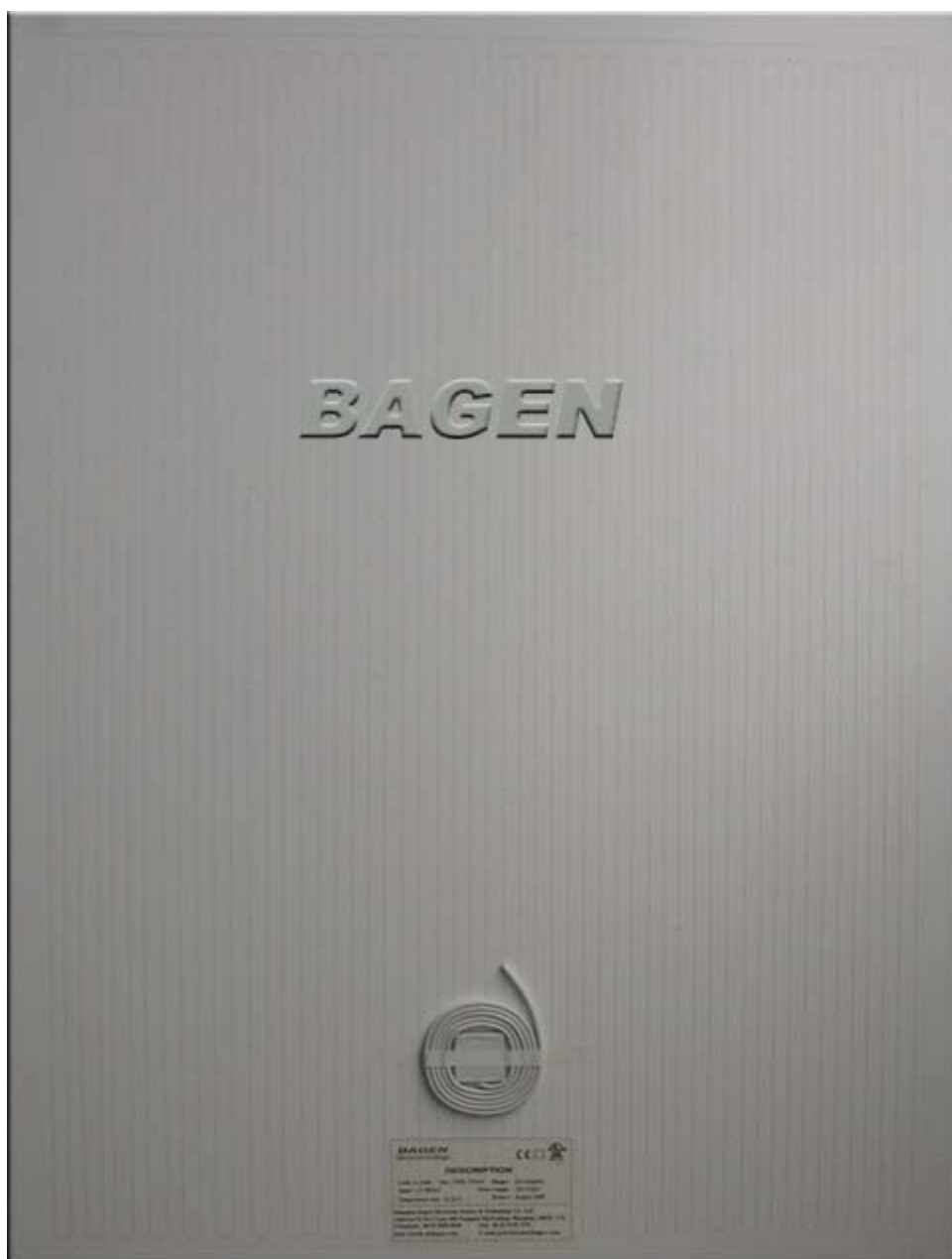
Project	5908
Qty.	455 Each
Item No.	BH-129



HBA

HIRSCH/BEDNER
ASSOCIATES
DESIGN CONSULTANTS

17/ 46 DOUGLAS ST.
MILTON 4064
QUEENSLAND
AUSTRALIA
FAX 62.3858.5699
■ TEL 617.3858.5688 ■
www.HBAdesign.com



Project

Crowne Plaza He Fei

Area:

Guestroom Sanitary

Item:

Mirror Defogger

Issued: 30-Nov-10

Project	5908
Scale	NTS
By	PS
Item No.	BHX-129

SPECIFICATION



HBA

HIRSCH/BEDNER
ASSOCIATES
DESIGN CONSULTANTS

17/ 46 DOUGLAS ST.
MILTON 4064
QUEENSLAND
AUSTRALIA
FAX 62.3858.5699
TEL 617.3858.5688
www.HBAdesign.com

Mfg. Toto (East China)
延安西路 2201号
上海国际贸易中心210室
Shanghai, China
www.toto.com.cn

T +86 21 6270 1010 #161
F +86 21 6270 3099 #161
c Liang Chen 陳良
e chenliang@toto.com.cn

Rep. Toto (East China)
延安西路 2201号
上海国际贸易中心210室
Shanghai, China
www.toto.com.cn

T +86 21 6270 1010 #161
F +86 21 6270 3099 #161
c Liang Chen 陳良
e chenliang@toto.com.cn

MUST BE OF CONTRACT QUALITY AND SUITABLE FOR COMMERCIAL
USE. FABRICATION TO BE IN ACCORDANCE WITH HBA PREAMBLES
(www.hbadesign.com/preambles.html) AND AS FOLLOWS:

1. Description描述: Drain System.
2. Location: Bathroom. Refer to Plans and Elevations for exact locations and quantities.
位置: 浴室. 確切安裝位置及數量請參閱平面及立面圖.
3. Refer to BHX-130 for details.
有关设计概念, 参阅BHX-130.
4. Model模型: YTB800D.
5. Dimensions尺寸: 796mm W x 196mm D.
6. Finish材質: Polished Chrome.
7. Manufacturer to submit sample to HBA for approval prior to production.
制造前, 制造商必须呈交样板给于HBA批准。
8. Shipping: Must be sufficiently crated/packed/ taped to prevent any damage or breakages.
运输: 必须恰当的箱起/包扎/粘起以防任何的破裂。
9. Must be contract quality and suitable for commercial use.
必须是符合合约的水准并适合商业用途。
10. All item quantites are to be confirmed by operator on site prior to construction.
制造商必须於動工前确认所有数量的需求。
11. All custom designed materials must be coordinated and confirmed by HBA prior to fabrication
by contractor.
任何訂製材料務必在承包商製作前與HBA協調及最後設計確認。

Issued: 30-Nov-10

Project

Crowne Plaza He Fei

Area:

Guestroom Sanitary

Item:

Drain System

Project

5908

Qty.

455 Each

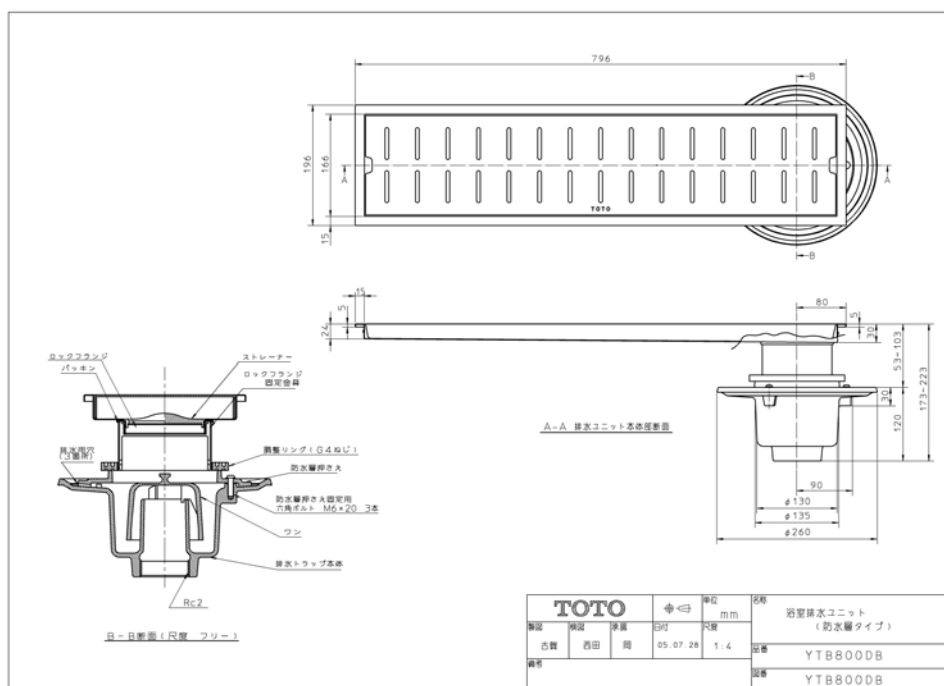
Item
No.

BH-130

HBA

HIRSCH/BEDNER
ASSOCIATES
DESIGN CONSULTANTS

17/ 46 DOUGLAS ST.
MILTON 4 0 6 4
QUEENSLAND
AUSTRALIA
FAX 62.3858.5699
■ TEL 617.3858.5688 ■
www.HBAdesign.com



Project

Crowne Plaza He Fei

Area:

Guestroom Sanitary

Item:

Drain System

Issued: 30-Nov-10

Project	5908
---------	------

Scale	NTS
-------	-----

By	PS
----	----

Item No.	BHX-130
----------	----------------



HBA

HIRSCH/BEDNER
ASSOCIATES
DESIGN CONSULTANTS

17/ 46 DOUGLAS ST.
MILTON 4064
QUEENSLAND
AUSTRALIA
FAX 62.3858.5699
■ TEL 617.3858.5688 ■
www.HBAdesign.com



Issued: 30-Nov-10

Project

Crowne Plaza He Fei

Area:

Guestroom Sanitary

Item:

Drain System

Project	5908
Scale	NTS
By	PS
Item No.	BHX-130

SPECIFICATION



HBA

HIRSCH/BEDNER
ASSOCIATES
DESIGN CONSULTANTS

17/ 46 DOUGLAS ST.
MILTON 4064
QUEENSLAND
AUSTRALIA
FAX 62.3858.5699
TEL 617.3858.5688
www.HBAdesign.com

Mfg. Toto (East China)
延安西路 2201号
上海国际贸易中心210室
Shanghai, China
www.toto.com.cn

T +86 21 6270 1010 #161
F +86 21 6270 3099 #161
c Liang Chen 陳良
e chenliang@toto.com.cn

Rep. Toto (East China)
延安西路 2201号
上海国际贸易中心210室
Shanghai, China
www.toto.com.cn

T +86 21 6270 1010 #161
F +86 21 6270 3099 #161
c Liang Chen 陳良
e chenliang@toto.com.cn

MUST BE OF CONTRACT QUALITY AND SUITABLE FOR COMMERCIAL
USE. FABRICATION TO BE IN ACCORDANCE WITH HBA PREAMBLES
(www.hbadesign.com/preambles.html) AND AS FOLLOWS:

1. Description描述: Floor Trap.
2. Location: Bathroom. Refer to Plans and Elevations for exact locations and quantities.
位置: 浴室. 確切安裝位置及數量請參閱平面及立面圖.
3. Refer to BHX-131 for details.
有关设计概念, 参阅BHX-131.
4. Model模型: TX 1 BN Floor Drain with Square Flange. Must be supplied with associated
hardware suitable for intended use and as recommended by manufacturer for size and weight of
individual items.
5. Dimensions尺寸: 115mm W x 115mm D. As per manufacturer.
6. Finish材質: Polished Chrome.
7. Manufacturer to submit sample to HBA for approval prior to production.
制造前, 制造商必须呈交样板给于H B A批准.
8. Shipping: Must be sufficiently crated/packed/ taped to prevent any damage or breakages.
运输: 必须恰当的箱起/包扎/粘起以防任何的破裂.
9. Must be contract quality and suitable for commercial use.
必须是符合合约的水准并适合商业用途.
10. All item quantites are to be confirmed by operator on site prior to construction.
制造商必须於動工前确认所有数量的需求.
11. All custom designed materials must be coordinated and confirmed by HBA prior to fabrication
by contractor.
任何訂製材料務必在承包商製作前與 HBA 協調及最後設計確認.

Issued: 30-Nov-10

Project

Crowne Plaza He Fei

Area:

Guestroom Sanitary

Item:

Floor Trap

Project

5908

Qty.

455 Each

Item
No.

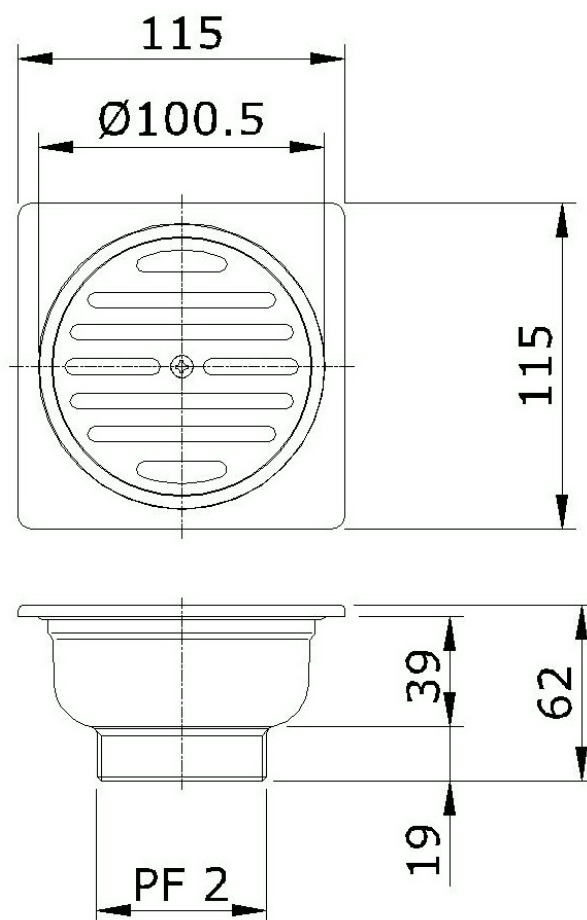
BH-131



HBA

HIRSCH/BEDNER
ASSOCIATES
DESIGN CONSULTANTS

17/ 46 DOUGLAS ST.
MILTON 4064
QUEENSLAND
AUSTRALIA
FAX 62.3858.5699
■ TEL 617.3858.5688 ■
www.HBAdesign.com



Issued: 30-Nov-10

Project

Crowne Plaza He Fei

Area:

Guestroom Sanitary

Item:

Floor Trap

Project	5908
Scale	NTS
By	PS
Item No.	BHX-131



HBA

HIRSCH/BEDNER
ASSOCIATES
DESIGN CONSULTANTS

17/ 46 DOUGLAS ST.
MILTON 4064
QUEENSLAND
AUSTRALIA
FAX 62.3858.5699
■ TEL 617.3858.5688 ■
www.HBAdesign.com



Project

Crowne Plaza He Fei

Area:

Guestroom Sanitary

Item:

Floor Trap

Issued: 30-Nov-10

Project	5908
Scale	NTS
By	PS
Item No.	BHX-131